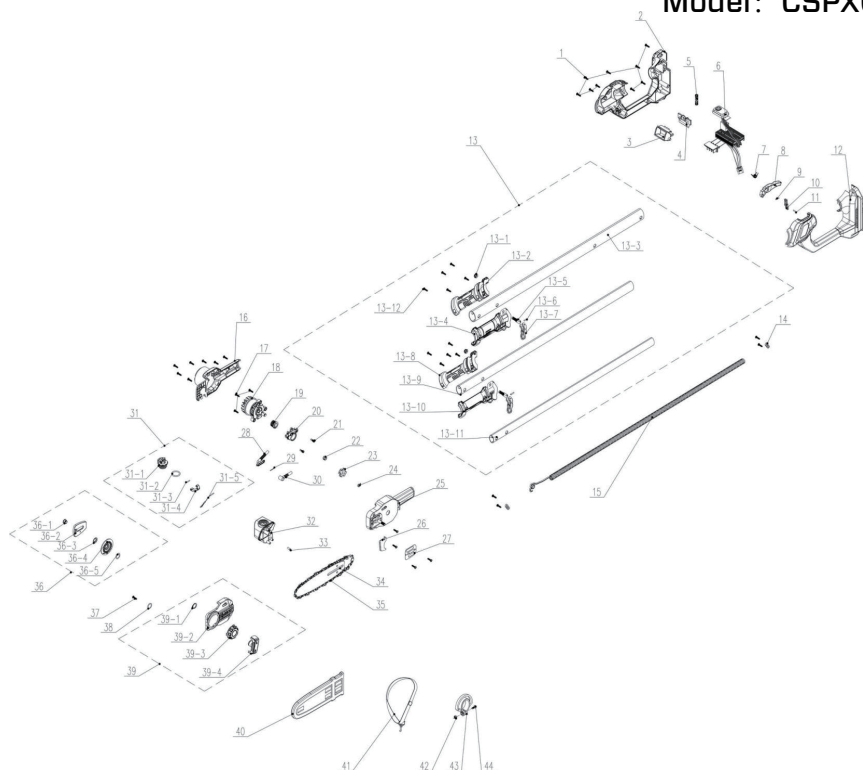


Model: CSPX6-M-EU



NO.	Part Number	Drawing Number	Description	Qty.
1	8SJEB40-16B	8SJEB40-16	Pan head tapping screw with plum blossom groove ST4*16	9
2	202024003335	A014014-003-00	Handle	1
3	202043000158	A034025-097-00	Dial	1
4	202026000379	A034025-096-00	Push button	1
5	8342-755002-0000000	8342-755002-00	Switch trigger spring	1
6	102003001287	A014014-037-00	Electronic components	3
7	8342-432101-0000000	8342-432101-00	Switch torsion spring	3
8	202004001361	A014014-010-00	trigger	1
9	8342-270102-0000000	8342-270102-00	Torsion spring	2
10	202171000026	A014014-011-00	Rotary rod	5
11	8PC30-14B	8PC30-14B	pin shaft	1
12	202024003334	A014014-002-00	Handle	1

13	199060000633	A014014-045-00	Tube assembly	1
13.1	8NE-08D02	8NE-08	All metal hexagon flange lock nut M8	2
13.2	202031001181	A012007-009-01	Bracket	1
13.3	207230100008	A014014-040-00	Big tube	1
13.4	202031001180	A012007-008-01	Bracket	1
13.5	8206-650204-0200000	8206-650204-02	Quick clip adjusting bolt	2
13.6	8086-650204-0000000	8086-650204-00	Cylindrical pin	2
13.7	202026000241	8044-650203-01	Push button	2
13.8	202031001161	A014014-013-00	Bracket	1
13.9	207230200011	A014014-041-00	Middle tube	1
13.10	202031001162	A014014-014-00	Bracket	1
13.11	207230300008	A014014-042-00	tube	1
13.12	8SJEB40-16B	8SJEB40-16	Pan head tapping screw with plum blossom groove ST4*16	10
14	8184-302201-0001720	8184-302201-00	Cable pressing plate	2
15	207034200008	A014014-025-00	Spring connecting wire	1
16	202016005499	A014014-006-00	Housing	1
17	8SJAN50-16D	8SJAN50-16	Three combination self tapping screw	3
18	101001001192	A014014-036-00	Motor assembly	1
19	202200000001	A014014-016-00	Worm	1
20	199010000185	A014014-038-00	Pump assembly	1
21	8SJGN04-14Q12.9	8SJGN04-14Q12.9	Triple screw M4*14	2
22	8342-462304-0000000	8342-462304-00	Tension spring	1
23	201035000009	8128-462202-01	Sprocket	1
24	8CE-07B	8CE-07B	E-type retaining ring	1
25	202016005498	A014014-005-00	Housing	1
26	201027000015	A014014-021-00	Woodcutters	1
27	201999001610	A014014-020-01	Insulation gasket	1
28	302000045	A013057-031-00	oil tube	1
29	8342-000002-0000000	8342-000002-00	Oil tube setting spring	0.06m
30	302000047	A014014-026-00	oil tube	1
31	199123000552	A014014-046-00	Fuel tank cap assembly	1
31.1	202165000704	A014014-012-00	Fuel tank cap	1
31.2	8204-981301-0000020	8204-981301-00	O-ring	1
31.3	207190100013	A013010-017-00	Cylindrical pin	1
31.4	202031000724	A014005-010-00	Bracket	1
31.5	8088-481501-0100110	8088-481501-01	Anti loss hook of fuel tank cover	1
32	199124000277	A014014-039-00	Fuel tank assembly	1

33	202074000005	8335-481201-01	valve	1
34	199140000166	A014014-049-00	Guide Bar	1
35	201001000053	A013049-019-00	Chain Saw	1
36	199999001958	A014014-047-00	Disc assembly	1
36.1	8331-760103-0000000	8331-760103-00	Connecting sleeve	1
36.2	201138000022	A014014-022-00	Push board	1
36.3	8186-462301-0000000	8186-462301-00	Fixing plate	1
36.4	202999002160	A014014-015-00	Spiral wheel	1
36.5	8204-462301-0000000	8204-462301-00	circlip	1
37	8206-438201-0000000	8206-438201-00	Push plate tension screw	1
38	207270100015	8208-462304-02	seal ring	1
39	199001000717	A014014-048-00	Cover as-end	1
39.1	8CC-19B	8CC-19B	Shaft retaining ring	1
39.2	202011000731	A014014-004-00	Cover	1
39.3	207259901093	A013069-011-00	knob	1
39.4	207250100041	A013069-012-00	knob	1
40	8331-431201-0000120	8331-431201-00	blade cover	1
41	8214-430802-0000110	8214-430802-00	Key strap	1
42	8NA-05B	8NA-05	Hexagon nut	1
43	202040000051	8204-433601-01	Strap ring	1
44	207420600009	8SJGD05-14	Compound groove pan head screw	1

