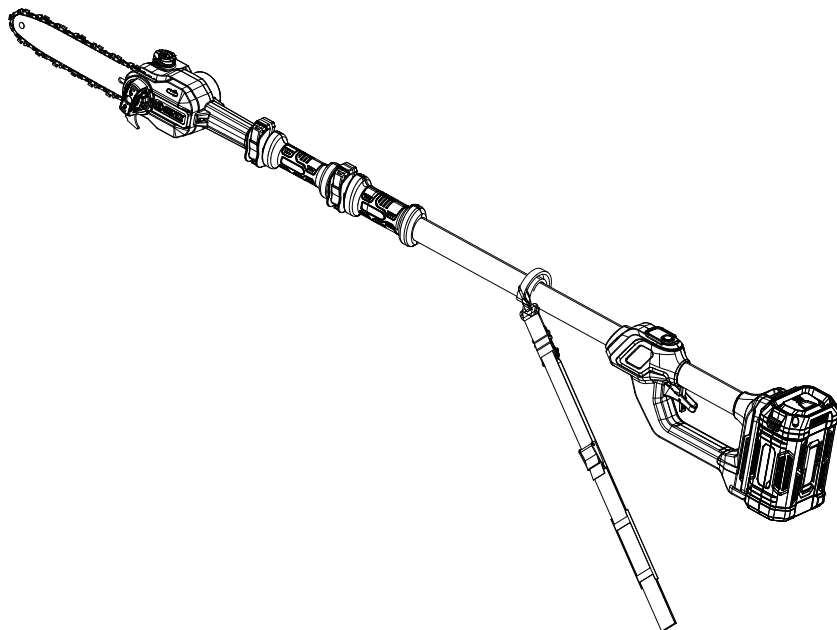




## CORDLESS POLE SAW



**CAUTION:** Before using this tool, please read this manual completely, and follow all operating safety measures.

- SAFETY
- ASSEMBLY
- OPERATION
- MAINTENANCE

**Senix Australia Pty Ltd.** 32/3 Westside Avenue, #Port Melbourne, Victoria, 3207  
For customer support, please call 1300 461 825 or email us at [info@senixtool.com](mailto:info@senixtool.com)

# TABLE OF CONTENTS

SAFETY & INTERNATIONAL SYMBOLS.....	2
SAFETY INSTRUCTIONS.....	3
KNOW YOUR UNIT.....	8
SPECIFICATIONS.....	9
ASSEMBLY.....	9
OPERATION.....	12
MAINTENANCE.....	16
TROUBLESHOOTING.....	19

## SAFETY & INTERNATIONAL SYMBOLS

The following table depicts and describes safety symbols that may appear on this product. Read, understand and follow all instructions on the machine before attempting to assemble and operate.



Caution / Warning.



**WARNING** - To reduce the risk of injury, user must read instruction manual.



Wear tight-fitting protective clothes.



Wear eye protection.



Wear hearing protection.



Wear head protection



Wear respiratory protection.



Do not expose the product to rain or wet conditions.



Wear protective, slip-resistant footwear.



Wear protective gloves.



Do not dispose of battery packs in rivers or immerse in water.



Do not dispose of battery packs in fire. They will explode and cause injury.



Do not disassemble, crush, heat above 100°C; Never expose the battery to microwaves or high pressures.



Keep bystanders a safe distance away from the work area.



Keep sufficient distance from electrical power lines.



**DANGER** – Keep hands away from blade.



**DANGER!** Risk of electrocution!



Tip contact can cause the guide bar to move suddenly upward and backward, which can cause serious injury.



Indoor use only. Only use battery charger indoors.



Chain speed (Max.)



Chain & Bar length



Machine weight (tool only).



The product complies with the applicable European directives and an evaluation method of conformity for these directives was done.



RCM Mark

# SAFETY INSTRUCTIONS

## ORIGINAL INSTRUCTIONS

### GENERAL POWER TOOL SAFETY WARNINGS



#### WARNING!

**Read all safety warnings, instructions, illustrations and specifications provided with this power tool.** *Failure to follow all instructions listed below may result in electric shock, fire and/or serious injury.*

**Save all warnings and instructions for future reference.**

*The term «power tool» in the warnings refers to your mains-operated (corded) power tool or battery-operated (cordless) power tool.*

#### 1) Work area safety

- a. **Keep work area clean and well lit.** *Cluttered or dark areas invite accidents.*
- b. **Do not operate power tools in explosive atmospheres, such as in the presence of flammable liquids, gases or dust.** *Power tools create sparks which may ignite the dust or fumes.*
- c. **Keep children and bystanders away while operating a power tool.** *Distractions can cause you to lose control.*

#### 2) Electrical safety

- a. **Power tool plugs must match the outlet. Never modify the plug in any way. Do not use any adapter plugs with earthed (grounded) power tools.** *Unmodified plugs and matching outlets will reduce risk of electric shock.*
- b. **Avoid body contact with earthed or grounded surfaces, such as pipes, radiators, ranges and refrigerators.** *There is an increased risk of electric shock if your body is earthed or grounded.*
- c. **Do not expose power tools to rain or wet conditions.** *Water entering a power tool will increase the risk of electric shock.*
- d. **Do not abuse the cord. Never use the cord for carrying, pulling or unplugging the power tool. Keep cord away from heat, oil, sharp edges or moving parts.** *Damaged or entangled cords increase the risk of electric shock.*
- e. **When operating a power tool outdoors,**

**use an extension cord suitable for outdoor use.** *Use of a cord suitable for outdoor use reduces the risk of electric shock.*

- f. **If operating a power tool in a damp location is unavoidable, use a residual current device (RCD) protected supply.** *Use of an RCD reduces the risk of electric shock.*
- #### 3) Personal safety
- a. **Stay alert, watch what you are doing and use common sense when operating a power tool. Do not use a power tool while you are tired or under the influence of drugs, alcohol or medication.** *A moment of inattention while operating power tools may result in serious personal injury.*
  - b. **Use personal protective equipment. Always wear eye protection.** *Protective equipment such as a dust mask, non-skid safety shoes, hard hat or hearing protection used for appropriate conditions will reduce personal injuries.*
  - c. **Prevent unintentional starting. Ensure the switch is in the off-position before connecting to power source and/or battery pack, picking up or carrying the tool.** *Carrying power tools with your finger on the switch or energising power tools that have the switch on invites accidents.*
  - d. **Remove any adjusting key or wrench before turning the power tool on.** *A wrench or a key left attached to a rotating part of the power tool may result in personal injury.*
  - e. **Do not overreach. Keep proper footing and balance at all times.** *This enables better control of the power tool in unexpected situations.*
  - f. **Dress properly. Do not wear loose clothing or jewellery. Keep your hair and clothing away from moving parts.** *Loose clothes, jewellery or long hair can be caught in moving parts.*
  - g. **If devices are provided for the connection of dust extraction and collection facilities, ensure these are connected and properly used.** *Use of dust collection can reduce dust-related hazards.*
  - h. **Do not let familiarity gained from frequent use of tools allow you to become complacent and ignore tool safety principles.** *A careless action can cause severe injury within a fraction of a second.*

#### 4) Power tool use and care

- a. **Do not force the power tool. Use the correct power tool for your application.** *The correct power tool will do the job better and safer at the rate for which it was designed.*
- b. **Do not use the power tool if the switch does not turn it on and off.** *Any power tool that cannot be controlled with the switch is dangerous and must be repaired.*
- c. **Disconnect the plug from the power source and/or remove the battery pack, if detachable, from the power tool before making any adjustments, changing accessories, or storing power tools.** *Such preventive safety measures reduce the risk of starting the power tool accidentally.*
- d. **Store idle power tools out of the reach of children and do not allow persons unfamiliar with the power tool or these instructions to operate the power tool.** *Power tools are dangerous in the hands of untrained users.*
- e. **Maintain power tools and accessories. Check for misalignment or binding of moving parts, breakage of parts and any other condition that may affect the power tool's operation. If damaged, have the power tool repaired before use.** *Many accidents are caused by poorly maintained power tools.*
- f. **Keep cutting tools sharp and clean.** *Properly maintained cutting tools with sharp cutting edges are less likely to bind and are easier to control.*
- g. **Use the power tool, accessories and tool bits etc. in accordance with these instructions, taking into account the working conditions and the work to be performed.** *Use of the power tool for operations different from those intended could result in a hazardous situation.*
- h. **Keep handles and grasping surfaces dry, clean and free from oil and grease.** *Slippery handles and grasping surfaces do not allow for safe handling and control of the tool in unexpected situations.*

#### 5) Battery Tool Use And Care

- a. **Recharge only with the charger specified by the manufacturer.** *A charger that is suitable for one type of battery pack may create a risk of fire when used with another battery pack.*
- b. **Use power tools only with specifically designated battery packs.** *Use of any*

*other battery packs may create a risk of injury and fire.*

- c. **When battery pack is not in use, keep it away from other metal objects, like paper clips, coins, keys, nails, screws or other small metal objects, that can make a connection from one terminal to another.** *Shorting the battery terminals together may cause burns or a fire.*
- d. **Under abusive conditions, liquid may be ejected from the battery; avoid contact.** *If contact accidentally occurs, flush with water. If liquid contacts eyes, additionally seek medical help. Liquid ejected from the battery may cause irritation or burns.*
- e. **Do not use a battery pack or tool that is damaged or modified.** *Damaged or modified batteries may exhibit unpredictable behaviour resulting in fire, explosion or risk of injury.*
- f. **Do not expose a battery pack or tool to fire or excessive temperature.** *Exposure to fire or temperature above 130 °C may cause explosion.*
- g. **Follow all charging instructions and do not charge the battery pack or tool outside the temperature range specified in the instructions.** *Charging improperly or at temperatures outside the specified range may damage the battery and increase the risk of fire.*

#### 6) Service

- a. **Have your power tool serviced by a qualified repair person using only identical replacement parts.** *This will ensure that the safety of the power tool is maintained.*
- b. **Never service damaged battery packs.** *Service of battery packs should only be performed by the manufacturer or authorized service providers.*



### WARNING!

Use only with SENIX X6 battery:  
B30X6/B40X6/B60X6/B80X6/B120X6  
And chargers: CHX6-L-EU/CHQX6-EU/CHQX6-M-EU/CHDX6-M-EU.

## POLE SAW SAFETY WARNING

- Use this pole saw only for the purposes it was designed, do not aim the pole saw at any people or animals.

- Store pole saw indoors – when not in use, pole saw should be stored indoors in dry, locked-up place – out of reach of children.
- Always inspect the tool before use, and after any impact, check for sign of wear or damage and repair as necessary, especially the parts of the cutting head.
- Never use the product standing on steps or a ladder. Do not work over shoulder height.
- Interrupt your work when you feel tired or exhausted. Make regular breaks to regenerate. A moment of inattention while operating the product may result in serious personal injury.
- Do not use machine when the operator is tired, ill or under the influence of alcohol or other drugs.
- Use slip-resistant foot protection as well as close-fitting clothes.
- Keep all parts of the body away from the saw chain. Do not remove cut material or hold material to be cut when saw chain is moving. Make sure the switch is off when clearing jammed material. A moment of inattention while operating the product may result in serious personal injury.
- Keep all parts of the body away from the saw chain when the product is operating.
- Before you start the product, make sure the saw chain is not contacting anything. A moment of inattention while operating products may cause entanglement of your clothing or body with the saw chain.
- Always hold the product with both hands on the handle and soft grip. Holding the product with only one hand or on parts not intended for that increases the risk of personal injury and should never be done.
- Wear safety glasses and hearing protection. Further protective equipment for head, hands, legs and feet is recommended. Adequate protective clothing will reduce personal injury by flying debris or accidental contact with the saw chain.
- Do not operate a product in a tree. Operation of a product while up in a tree may result in personal injury.
- Always keep proper footing and operate the product only when standing on fixed, secure and level surface. Slippery or unstable surfaces such as ladders may cause a loss of balance or control of the product.
- Carry the product by the soft grip with the product switched off and away from your body. When transporting or storing the product always fit the guide bar cover. Proper handling of the product will reduce the likelihood of accidental contact with the moving saw chain.
- Follow instructions for lubricating, chain tensioning and changing accessories. Improperly tensioned or lubricated chain may either break or increase the chance for kickback.
- Keep handles dry, clean, and free from oil and grease. Greasy, oily handles are slippery causing loss of control.
- Cut wood only. Do not use product for purposes not intended. For example: do not use product for cutting plastic, masonry or non-wood building materials. Use of the product for operations different than intended could result in a hazardous situation.
- Pay attention to national and local regulations. National and local regulations may restrict the use of this product.
- Only use replacement guide bars and saw chains specified by the manufacturer or equivalent replacements. Using non-approved cutting attachments can result in personal injuries and damage to property.
- Before using the product and after any impact or dropping, check for signs of wear or damage and repair as necessary.
- Carry out cleaning and maintenance works before storage of the pruner.

## CAUSES AND OPERATOR PREVENTION OF KICKBACK

- Kickback may occur when the nose or tip of the guide bar touches an object, or when the wood closes in and pinches the saw chain in the cut.
- Tip contact in some cases may cause a sudden reverse reaction, kicking the guide bar up and back towards the operator.
- Pinching the saw chain along the top of the guide bar may push the guide bar rapidly back towards the operator.
- Either of these reactions may cause you to lose control of the saw which could result in serious personal injury. Do not rely exclusively upon the safety devices built into your saw. As a product user, you should take several steps to keep your cutting jobs free from accident or injury. Kickback is the result of tool misuse and/or incorrect operating procedures or conditions and can

be avoided by taking proper precautions as given below:

1. Maintain a firm grip, with thumbs and fingers encircling the product handles, with both hands on the saw and position your body and arm to allow you to resist kickback forces. Kickback forces can be controlled by the operator, if proper precautions are taken. Do not let go of the product.
2. Do not overreach. This helps prevent unintended tip contact and enables better control of the product in unexpected situations.
3. Only use replacement bars and chains specified by the manufacturer. Incorrect replacement bars and chains may cause chain breakage and/ or kickback.
4. Follow the manufacturer's maintenance instructions for the saw chain. Decreasing the depth gauge height can lead to increased kickback.

## VIBRATION AND NOISE REDUCTION

To reduce the impact of noise and vibration emission, limit the time of operation, use low-vibration and low-noise operating modes as well as wear personal protective equipment. Take the following points into account to minimize the vibration and noise exposure risks:

1. Only use the product as intended by its design and these instructions.
  2. Ensure that the product is in good condition and well maintained.
  3. Use correct attachments for the product and ensure they are in good condition.
  4. Keep tight grip on the handles/gripping surface.
  5. Maintain this product in accordance with these instructions and keep it well lubricated (where appropriate).
  6. Plan your work schedule to spread any high vibration tool use across a longer period of time.
  7. Prolonged use of the product exposes the user to vibrations that can cause a range of conditions collectively known as hand-arm vibration syndrome (HAVS) e.g. fingers going white; as well as specific diseases such as carpal tunnel syndrome.
- To reduce this risk when using the product, always wear protective gloves and keep

your hands warm.

- The symptoms of HAVS include any combination of the following: Tingling and numbness in the fingers; Not being able to feel things properly; Loss of strength in the hands; Fingers going white (blanching) and becoming red and painful on recovery (particularly in the cold and wet, and probably only in the tips at first). Seek medical advice immediately if such symptoms are experienced.

## EMERGENCY

Familiarise yourself with the use of this product by means of this instruction manual. Memorise the safety directions and follow them to the letter. This will help to prevent risks and hazards.

1. Always be alert when using this product, so that you can recognise and handle risks early. Fast intervention can prevent serious injury and damage to property.
2. Switch off and disconnect from the power supply if there are malfunctions. Have the product checked by a qualified professional and repaired, if necessary, before you operate it again.

## RESIDUAL RISKS

Even if you are operating this product in accordance with all the safety requirements, potential risks of injury and damage remain. The following dangers can arise in connection with the structure and design of this product:

1. Health defects resulting from vibration emission if the product is being used over long periods of time or not adequately managed and properly maintained.
2. Injuries and damage to property due to broken attachments or the sudden impact of hidden objects during use.
3. Danger of injury and property damage caused by flying objects.
4. Prolonged use of this product expose the operator to vibrations and may produce 'whitefinger' disease. In order to reduce the risk, please wear gloves and keep your hands warm. If any of the 'whitefinger' symptoms appear, seek medical advice immediately. 'Whitefinger' symptoms include: numbness, loss of feeling, tingling, pricking, pain, loss of strength, changes in skin colour or condition. These symptoms normally appear in the fingers,

hands or wrists. The risk increases at low temperatures.



## **WARNING!**

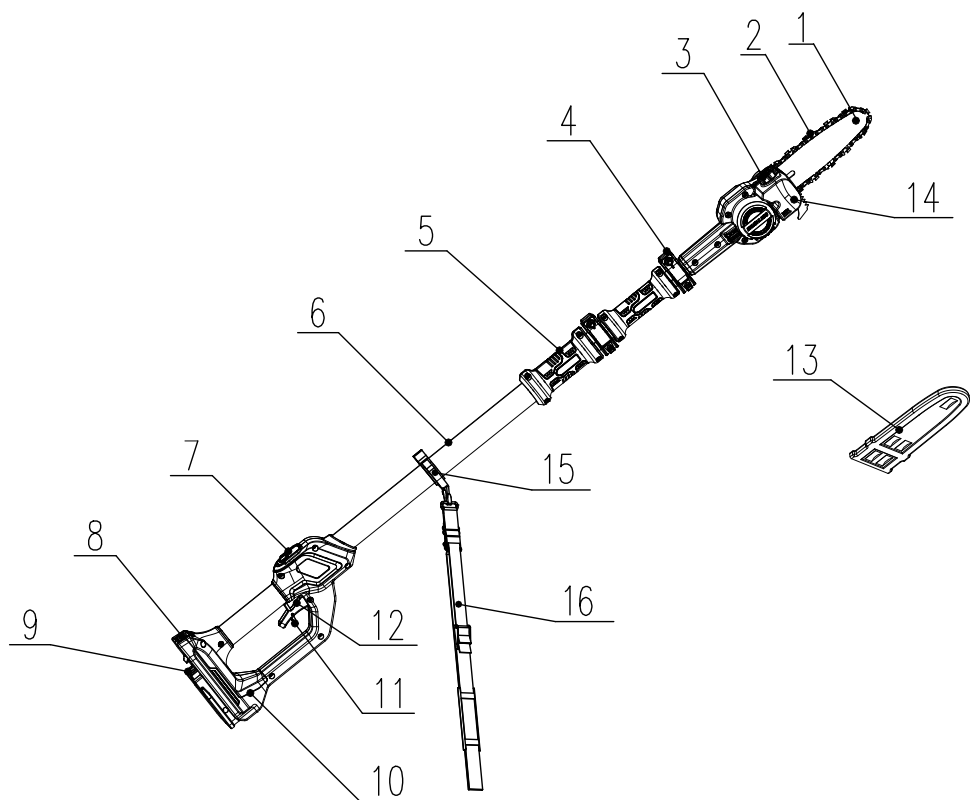
This product produces an electromagnetic field during operation! This field may under some circumstances interfere with active or passive medical implants! To reduce the risk of serious or fatal injury, we recommend persons with medical implants to consult their doctor and the medical implant manufacturer before operating this product!

## **SAVE THESE INSTRUCTIONS**

### **INTENDED USE**

This tool is a cutting implement mounted on a pole to enable the operator to cut the branches of standing trees. It is not intended for use as a regular chainsaw.

# KNOW YOUR UNIT



## APPLICATIONS

Model: CSPX6-M-EU

As a pole saw:

Cutting small limbs.


General tree pruning.

1	Guide bar
2	Saw chain
3	Oil tank cap
4	Telescoping lock clip
5	Connection support
6	Tube
7	Control panel
8	Battery-release button

9	Battery pack support
10	Housing
11	Safety switch
12	Trigger
13	Guide bar cover
14	Oil tank
15	Harness buckle
16	Harness



## SPECIFICATIONS

Model	CSPX6-M-EU
Input Voltage	56 V  (60 V max*)
Rated Output Power	1 000 W
No-Load Speed	0 - 8 500 RPM (Eco) 0 - 11 000 RPM (Max)
Chain Speed	16 m/s (Eco)   20 m/s (Max)
Chain Pitch	1 cm
Chain & Bar Length	25 cm
Saw Chain Model	3/8LP.043.40E 90XP
Guide Bar Model	ES104MLEA041
Adjustment Range	1.6 - 2.8 m
Max Reach**	4.3 m
Oil Tank Capacity	140 ml
Recommended Charging Temperature	4 °C-40 °C
Recommended Operating Temperature	-15 °C-40 °C
Recommended Storage Temperature	-20 °C-70 °C
Vibration Level	Max. 9.437 m/s <sup>2</sup>
Measurement Uncertainty K	1.5 m/s <sup>2</sup>
Sound Pressure Value L <sub>PA</sub>	87 dB(A)
Sound Power Value L <sub>WA</sub>	102 dB(A)

Measurement Uncertainty K <sub>PA</sub> and K <sub>WA</sub>	3 dB(A)
Weight (Tool Only)	3.5 kg

\*60V Max battery, maximum initial battery voltage (measured without a workload) is 60V. The nominal voltage is 56V.

\*\*Based on a 6ft person holding the pole in a straightened position at shoulder level at 60° from the ground.

## ASSEMBLY

1. Unpack all parts and lay them on a flat, stable surface:
2. Remove all packing materials and shipping devices, if applicable.
3. The scope of delivery varies depending on the country and purchased variant. Model CSPX6-M-EU
  - Pole saw x1
  - Saw chain x1
  - Guide bar x1
  - Guide bar cover x1
  - Harness x1
  - Instruction manual x1
4. If you find that parts are missing or show damage do not use the product but contact your dealer. Using an incomplete or damaged product represents a hazard to people and property.
5. Ensure that you have all the accessories and tools needed for assembly and operation. This also includes suitable personal protective equipment.



## WARNING!



Wear protective gloves for this assembly work and always lay the product on a flat and stable surface while assembling. Follow the assembly instructions step-by-step and use the pictures provided as a visual guide to easily assemble the product! Do not insert the battery pack before the power tool is completely assembled or adjusted!

# INSTALLING THE SAW CHAIN AND THE GUIDE BAR

## **WARNING!**

Ensure the battery pack is removed from the pole saw before attaching the bar and chain.

### **Guide bar**

Supports and guides the saw chain.

### **Saw chain**

A loop of chain fitted with cutting teeth that cuts the wood when it is driven by the power head and supported by the guide bar.

1. Totally loosen the locking knob counterclockwise. Then remove the side cover.

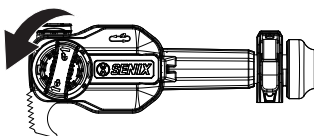


Fig. 1

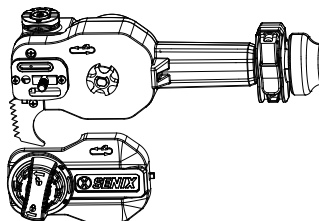


Fig. 2

2. Loop the new chain into the slot of the guide bar according to the provided figure.

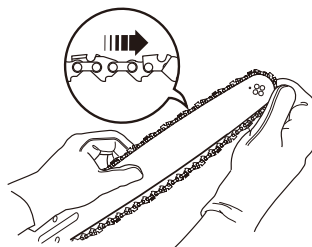


Fig. 3

3. Totally twist the tensioning gear counterclockwise. Then put the guide bar assembly into the housing screw, install the saw chain on the drive sprocket.

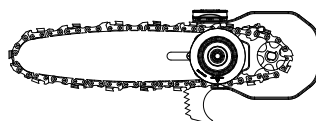


Fig. 4

4. Pull the chain around the guide bar with your gloved hand or using auxiliary tools, then turn the tension clockwise to make sure it can run smoothly.



## **NOTE:**

It is still recommended to check for smoothness of the saw chain before operation even after using it for a period of time.

5. Replace the side cover and slightly tighten the locking knob. Meanwhile, protect the saw chain from sliding out.
6. Twist the adjusting knob till the saw chain can be lifted by 2-3 mm from the center of the guide bar.

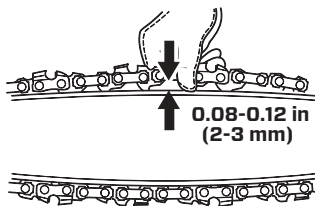


Fig. 5

7. Fully tighten the locking knob clockwise.

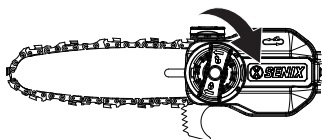


Fig. 6



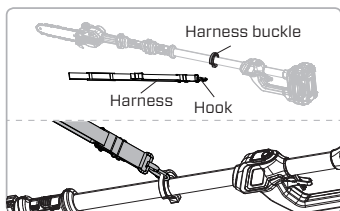
## NOTE:

After a short period of use, allow the chain to cool, remove the battery and check the tension again.

## HARNESS INSTALLATION

A harness is to be worn by the operator for support and balance during cutting operations.

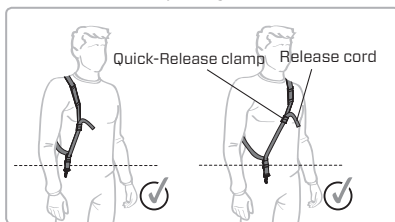
1. Fasten the hook on the harness buckle.



2. Adjust the length of the harness to attain a comfortable working position. Ensure that the quick-release clamp is on your chest

(NOT on your back).

3. Pull down the release cord of the quick-release clamp under emergencies to take off the harness quickly.



## FILLING THE OIL TANK



### WARNING!

Always remove the battery pack from the unit before inspection and adjustment work. Wear protective gloves during maintenance to prevent injury.



### WARNING!

Never operate the pole saw without bar and chain oil. The use of the pole saw without enough bar and chain oil will damage the unit.

Only use special saw chain oil. Other oils will run the risk of damaging the unit and voiding the warranty. Take note of temperature conditions. Using the saw at various temperatures requires the use of differing oils. To ensure a sufficient layer of lubricant at lower temperatures, use liquid oil (low viscosity).

1. Place the pole saw on a level surface. Clean the area around the oil tank cap and then open it.
2. Fill the oil tank with bar and chain oil carefully. Make sure that no dirt gets into the oil tank so that the oil nozzle does not clog.
3. Close the oil tank cap and wipe off residual oil around the opening.

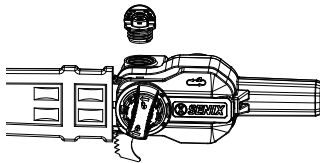


Fig. 7

## INSTALLING/REMOVING BATTERY PACK

### To install:

Align the battery ribs with the mounting slots and press the battery pack down until you hear a “click”.

### To remove:

Depress the battery-release button and pull the battery pack out.

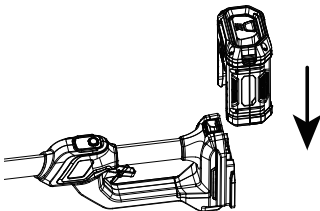


Fig. 8

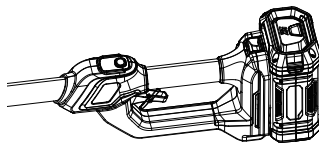


Fig. 9



### NOTE:

Refer to the manuals for the charger and battery pack for more details about how the charger to charge the battery pack and other information regarding to the charger and battery pack.

## OPERATION



### WARNING!

Always wear eye, hearing, hand protection to reduce the risk of injury when operating the tool.



### WARNING!

To avoid serious personal injury, do not operate the pole saw improperly assembled. Do not attempt to operate the pole saw if any part is damaged or missing.

## ADJUSTING THE TENSION OF SAW CHAIN

1. The chain will be loose( beyond 8mm) after a long time work.
2. If adjustments are needed, slightly loosen the locking knob. Then turn the adjusting knob clockwise.
3. Tighten the locking knob

## ADJUSTING POLE LENGTH



### NOTE:

The pole saw is designed with two telescopic rod to satisfy the operation requirement for user.

1. Unlock the telescoping lock clip so that the pole can freely extend outwards and inwards.
2. Extend the pole to the desired length and lock the telescoping lock clip to hold it in place.
3. In order to prevent accident or injury, check the tightness by holding and stretching the both ends of the telescoping part.
4. If the locked telescoping lock clip can not firmly hold the pole. The lock nut for the telescoping lock clip is supposed to be tightened by a wrench.

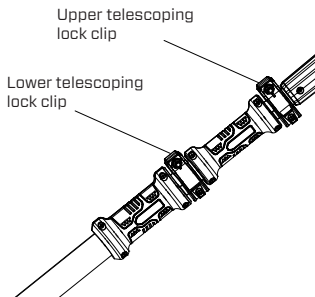


Fig. 10

## SWITCHING ON/OFF

### Safety switch

Helps to prevent accidental or unauthorized activating of the trigger. It must be depressed before the trigger can be activated.

### Trigger

Turns the pole saw On and Off.

1. To start, push the safety switch forward then depress the trigger. You can choose to press ECO button to switch to economy mode.
2. To stop, release the trigger.

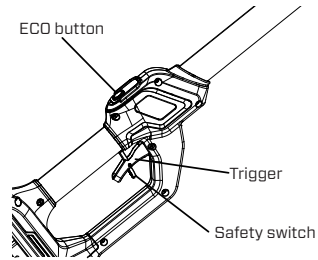


Fig. 11

## THE CONTROL PANEL

### Battery pack power display:

When the pole saw is switched on/off, the battery pack power display will keep lighting for 5 seconds. When the battery pack is low voltage, the power display will flash.

### ECO indicator:

Press the ECO indicator button and the indicator is on. If the trigger is not activated, the indicator will go out after keeping lighting for 5 seconds. If the trigger is activated, the indicator will keep lighting till the trigger is turned off.

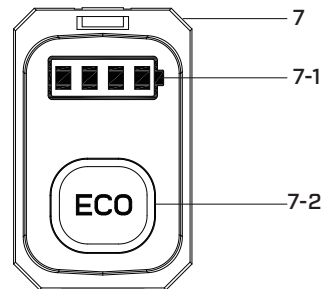


Fig. 12

7	Control panel
7-1	Battery pack power display
7-2	ECO indicator

## HOLDING POLE SAW

- Stand in the operating position and stand up straight. Do not bend over.
- Keep feet apart and firmly planted.
- Hold the shaft grip with the right hand. Keep the right arm slightly bent.
- Hold the handle with the left hand. Keep the left arm straight.
- Hold the unit at waist level.
- Position the cutting head a few inches above the ground.
- Do not over-reach; Keep all parts of your body away from the rotating cutting attachment and hot surfaces.

## HANDLING POLE SAW

- Hold the pole saw with both hands.
- Fully grip both handles at all times during operation. Never operate pole saw using only one hand.
- Hold the pole saw at a max. angle of 60° from the horizontal level.

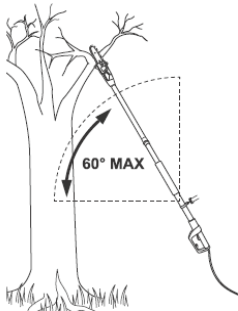


Fig. 13

- Do not stand directly under the limb you are sawing. Objects may fall different than expected. Position yourself well out of the path of falling limbs.
- Keep bystanders away from cutting end of garden power tool and a safe distance from the work area.
- Do not stand on a ladder or other support while using pole saw. Maintain a firm footing and balance during operation.
- Hold the pole saw to the side of your body.
- Do not operate the pole saw with arms fully extended or attempt to saw areas that are difficult to reach.
- Keep a firm, steady pressure on the pole saw while working. Do not try to force the pole saw through the wood, let the chain do the work. Use the gripping teeth to apply

minimal leverage pressure.

- Use caution when reaching end of cut. The pole saw's weight may change unexpectedly as it cuts free from the wood. Always remove the pole saw from a wood cut while it is running.

## AVOIDING KICKBACK DURING USE

KICKBACK OCCURS WHEN THE CHAIN (AT THE TIP OF THE GUIDE BAR) COMES IN CONTACT WITH A LOG OR WOOD, OR WHEN THE SAW CHAIN BECOMES JAMMED, OFTEN WHEN SAWING SIDEWARD, SLANTED OR DURING LENGTHWISE CUTS.

To avoid kickback:

- Saw with guide bar at a flat angle.
- Do not work with a loose, overstretched or worn out chain.
- Ensure chain is sharpened correctly.
- Do not work with the tip of the guide bar.
- Hold the pole saw firmly with both hands.
- Use a low kickback chain.
- Ensure correct chain tension.

## CUTTING THIN BRANCHES

- Thin branches can be cut off with a single cut.
- To prevent the branch from slivering and buckling, cut the branch off in several pieces.

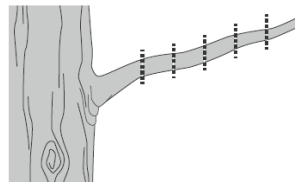


Fig. 14

## CUTTING THICK BRANCHES

WHEN CUTTING LARGER BRANCHES, THE FOLLOWING FOUR CUTS ARE NECESSARY:

- First cut into the branch from below,

outside of the location where you intend to cut off the branch.

- The cut should go one third to halfway through the branch (1).
- Cut into the branch from the top, making sure it's outside from where the branch is to be sawed (2).
- To keep stump and branch from splintering, do a stub undercut below branch (3).
- Cut off the stump with one clean cut from top to bottom. If desired, seal the cut with a suitable compound (4).

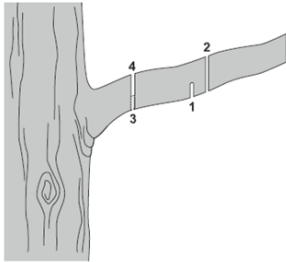


Fig. 15

- When finished cutting, turn off the Pole Saw and remove the battery pack after use.
- Clean, then store the tool indoors out of children's reach.

## SAFE WORK

### WARNING!

Do not operate near electrical power lines. The unit has not been designed to provide protection from electric shock in the event of contact with overhead electric lines. Consult local regulations for safe distances from overhead electric power lines and ensure that the operating position is safe and secure before operating the tool.

- Before beginning work and after dropping or other impacts, inspect the pole saw in order to identify any significant damage to the housing, the saw chain and the guide bar. Never use an obviously damaged machine.
- Before beginning work and regularly during work check oil level, lubrication system and chain tension.
- Wear hearing protection and protective goggles and a safety helmet with integrated hearing protection and a face guard. This provides protection against

falling branches and recoiling branches.

- In order to ensure safe work, a maximum working angle of 60° is prescribed.
- Never stand below the branch to be sawed.
- Exercise caution when sawing branches under tension or splintering wood.
- Potential risk of injury from falling branches and flying wood projectiles!
- If the machine is in operation, keep persons and animals away from the danger area.
- The machine is not protected against electric shock when coming into contact with high-voltage lines.
- Maintain a minimum clearance of 10 m (30 feet) from current carrying lines. Life-threatening danger from electric shock!
- When working on an incline, always stand above or to the side of the branch to be sawed.
- Hold the machine as close as possible to your body. By doing so, you maximize your balance. Make absolutely sure to wear the appropriate, close fitting protective clothing, such as chainsaw-protective pants, gloves and safety shoes.
- Never overwork yourself. Take a regular rest during working.

## SAWING TECHNIQUES

### WARNING!

The risk of the operation may occur, such as the sharp tree branches may cut the user's skin, the blade of the unit may hurt the user's body. Always wear eye, hearing, hand, foot and body protection to reduce the risk of injury when operating this unit.

- Make sure the chain is running at full speed before touching the branch to be cut.
- When removing branches, hold the pole saw at an angle ranging from 0 to 60° in order to avoid being struck by a falling branch. The saw should never be operated directly above head.
- Saw off the lower branches on the tree first. By doing so, it is easier for the cut branches to fall to the ground.
- At the end of the cut, the weight of the saw suddenly increases for the user, because the saw is no longer supported on the branch. There is the risk of losing control of the saw.
- Only pull the saw out of the cut with the saw chain running. By doing so, you can prevent

it from getting jammed.

- Do not saw with the tip of the guide bar.
- If any foreign object is hit or if vibrations occur, stop the machine immediately. Disconnect the battery. Check that the machine is not damaged. Repair any damage.
- For sawing off smaller branches, place the stop face of the saw on the branch. This prevents unwanted movements of the saw at the beginning of the cut. While applying light pressure, guide the saw through the branch from top to bottom.
- For sawing off larger branches, first make a relief cut. Saw through 1/3 of the branch diameter from the bottom to top using the top side of the guide bar. Then saw from top to bottom for the other 2/3 using the bottom side of the guide bar.
- Saw off longer branches in sections in order to maintain control over the location of impact.

## MAINTENANCE

### **WARNING!**

Remove and pull out the battery pack before maintenance!  
Wear protective gloves!  
Maintain this product regularly and carefully!  
If the product is improperly maintained, it may fail at its intended task, which may produce fatal consequences.

### **WARNING!**

Wear protective clothing and observe all safety instructions to prevent serious personal injury.

1. Keep the product clean. Remove debris from it after each use and before storage.
2. Regular and proper cleaning will help ensure safe use and prolong the life of the product.
3. Inspect the product before each use for worn and damaged parts. Do not operate it if you find broken and worn parts.

### **WARNING!**

Only perform repairs and maintenance work according to these instructions! All further works must be performed by a qualified

specialist!

### **WARNING!**

1. If the battery is empty and the product is switched off automatically, do not continue to press the switch trigger.
2. Charging the battery only after the battery pack is cooled down.
3. Charging the battery completely if the product will not be used for long time.
4. Charging the battery at least every 6 months to maintain the optimal capacity.

## REPLACING THE SAW CHAIN AND GUIDE BAR

### **WARNING!**

Only use replacement bar/chain in the specifications.  
DO NOT use any other bar/chain combination.

### **WARNING!**

When handling saw chains, always wear protective gloves.

Replace chain when cutters are too worn to sharpen or when chain breaks. Only use replacement chain noted in this manual. Always include new drive sprocket when replacing chain. This will maintain proper driving of chain.

1. Place the pole saw body on a firm and level surface.
2. Totally loosen the locking knob counterclockwise. Then remove the side cover.
3. Wearing protective gloves, take off the broken saw chain or the guide bar.
4. Wrap the new saw chain around the new guide bar, making sure that the teeth are aimed in the direction of rotation. The chain should be properly set in the slot running along the entire outside edge of the guide bar.
5. Totally twist the tensioning gear counterclockwise. Then put the guide bar assembly into the housing screw, install the saw chain on the drive sprocket.
6. Pull the chain around the guide bar with your gloved hand or using auxiliary tools, then turn the tension clockwise to make sure it can run smoothly.
7. Replace the side cover and slightly tighten the locking knob. Meanwhile, protect the



saw chain from sliding out.

8. Twist the adjusting knob till the saw chain can be lifted by 2-3 mm from the center of the guide bar.
9. Fully tighten the locking knob clockwise.

## SHARPENING THE SAW CHAIN

### **WARNING!**

Do not sharpen the saw chain by yourself, unless you are experienced in doing so. It is recommended to have the chain saw sharpened by an authorized service.

Keep chain sharp. Your saw will cut more efficient and more safely. A dull chain will cause undue sprocket, guide bar, chain, and motor wear. Do not force chain into wood to prevent the saw chain from becoming dull.

To sharpen the chain:

1. Using protective gloves, ensure the chain is correctly tensioned on the guide bar.
2. Use a round file with a diameter 1.1 times the cutting tooth depth. Make sure 20% of the file diameter is above the cutter's top plate.
3. File at an angle perpendicular to the bar, and at an angle of 25° to the direction of travel.
4. File each tooth from the inside towards outside only. File one side of the chain first then turn the saw around and repeat the process.
  - Sharpen each tooth equally by using the same number of strokes.
  - Keep all cutter lengths equal. Each time the cutting tip is sharpened the cutting length is reduced. When the cutter length is reduced to 4 mm (0.16 inch), the chain is worn out and should be replaced.
  - The depth gauge setting is also reduced with each sharpening. Every 5 sharpenings use a depth gauge measuring tool to check the height between the cutting tip and the ridge. When necessary, use a flat file to file down the ridge to achieve the 6 mm (0.25 inch) depth gauge setting. Depth gauge measuring tools are available from most pole saws retailers.
  - If the saw is not functioning properly, take

it to a qualified pole saw service center to have the saw inspected. Use only identical parts as listed in this manual.

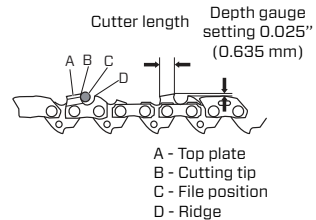


Fig. 16

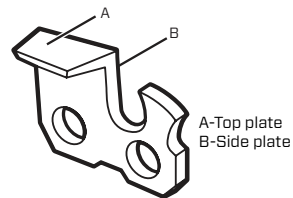


Fig. 17

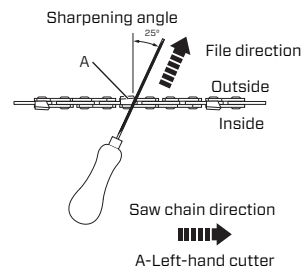


Fig. 18

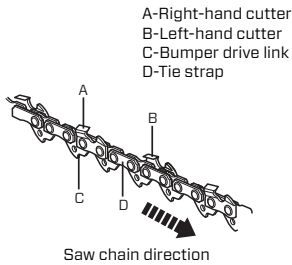


Fig. 19

## CLEANING

- Remove wood chips and other debris from the housing. Clean dirty with a soft, dry cloth. Dirt or oil can cause a poor electrical connection, resulting in loss of power.
- After use, clean debris from the saw chain and guide bar. Wipe with a cloth moistened with mild soap solution. Never use harsh cleaners or solvents.
- Always clean out wood chips, saw dust and dirt from the bar groove when replacing saw chain.
- Ensure the area under the side cover is free of wood chips and other debris.

## TRANSPORTATION

- Install the guide bar cover.
- If desired, drain the bar and chain oil to reduce seepage.
- Carry saw by its handle with bar and chain facing behind the operator.
- Ensure the tool is secure and cannot fall or move into contact with people or property.



### NOTE:

The guide bar cover prevents the operator from coming in contact with the sharp chain blades when the machine is not in use. It also helps keep the chain blades from being nicked or damaged when the machine is transported or stored.

## STORAGE

- Clean chainsaw thoroughly as described above.
- Install the guide bar cover and place an absorbent pad under the bar.
- Store in a dry place.
- Keep out of reach of children or pets.
- We recommend using the original package

for storage or covering the product with a suitable cloth or enclosure to protect it against dust.

## DISPOSAL

Waste product should not be disposed of with household waste. Please recycle where facilities exist. Check with your local authority or retailer for recycling advice.



Electrical products should not be discarded with household products. Used electrical products must be collected separately and disposed of at collection points provided for this purpose. Talk with your local authorities or dealer for advice.

# TROUBLESHOOTING

Suspected malfunctions are often due to causes that the users can fix themselves. Therefore, check the product using this section. In most cases the problem can be solved quickly.

Problem	Possible Cause	Solution
Product does not start	Battery pack not properly attached	Attach properly
	Battery pack capacity too low	Remove and charge battery pack
	Battery pack damaged	Inspection by a specialist electrician
	Safety switch is not turned on	Refer to chapter “SWITCHING ON/OFF”
Product does not cut properly	Insufficient chain tension	Refer to chapter “ADJUSTING THE TENSION OF SAW CHAIN”
	Dull / worn chain	Sharpen or replace the chain.
	Chain installed backwards	Refer to chapter “INSTALLING THE SAW CHAIN AND THE GUIDE BAR”
Product suddenly stops	Battery pack capacity too low	Remove and recharge battery pack
	The machine is overloaded	Release the trigger and restart the machine

