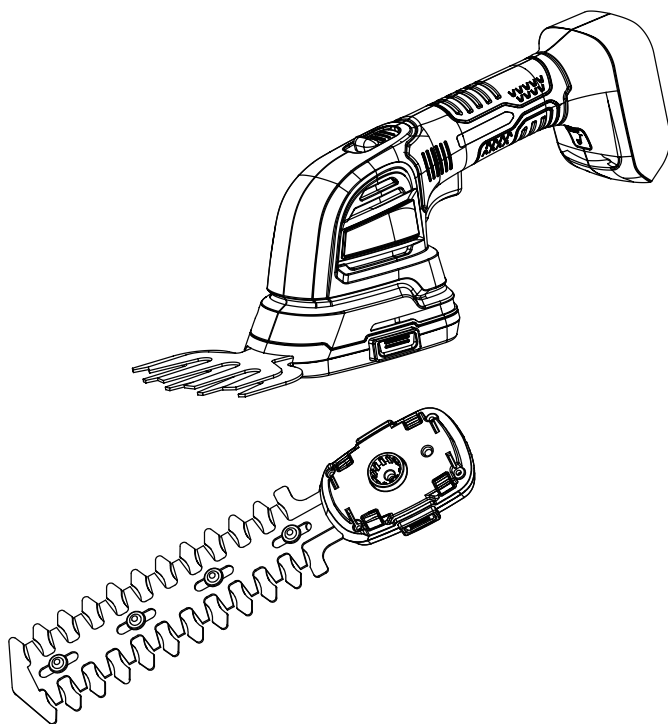




2-IN-1 CORDLESS GRASS SHEAR & HEDGE TRIMMER KIT



CAUTION: Before using this tool, please read this manual completely, and follow all operating safety measures.

- SAFETY
- ASSEMBLY
- OPERATION
- MAINTENANCE

Senix Australia Pty Ltd. 32/3 Westside Avenue, #Port Melbourne, Victoria, 3207
For customer support, please call 1300 461 825 or email us at info@senixtool.com

TABLE OF CONTENTS

SAFETY & INTERNATIONAL SYMBOLS.....	2
SAFETY INSTRUCTIONS.....	3
KNOW YOUR UNIT	7
SPECIFICATIONS*	8
ASSEMBLY.....	8
OPERATION.....	9
MAINTENANCE.....	10
TROUBLESHOOTING.....	12

SAFETY & INTERNATIONAL SYMBOLS

Explanation of Safety & International Symbols describes safety and international symbols and pictographs that may appear on this product. Read the operator's manual for complete safety, assembly, operating and maintenance and repair information.



Caution / Warning.



To reduce the risk of injury, user must read instruction manual.



Wear eye protection.



Wear a dust mask.



Wear safety footwear.



Wear protective gloves.



Wear hearing protection.



Do not use in rain or wet conditions.



DANGER - Keep hands away from blade.



Warning: cutting means continues to run after the motor is switched off.



Do not dispose of battery packs in rivers or immerse in water.



Do not dispose of battery packs in fire. They will explode and cause injury.



Use the battery in a maximum temperature of 50°C (122°F).



Do not disassemble, crush, heat above 100°C (212°F); Never expose the battery to microwaves or high pressures.



Keep bystanders a safe distance away from the work area.



Indoor use only. Only use battery charger indoors.



RCM Mark

SAFETY INSTRUCTIONS

GENERAL POWER TOOL SAFETY WARNINGS



WARNING!

Read all safety warnings, instructions, illustrations and specifications, provided with this power tool. Failure to follow all instructions listed below may result in electric shock, fire and/or serious injury.

Save all warnings and instructions for future reference.

The term “power tool” in the warnings refers to your mains-operated (corded) power tool or battery-operated (cordless) power tool.

1. Work Area Safety

- a. **Keep work area clean and well lit.**
Cluttered or dark areas invite accidents.
- b. **Do not operate power tools in explosive atmospheres, such as in the presence of flammable liquids, gases or dust.** *Power tools create sparks which may ignite the dust or fumes.*
- c. **Keep children and bystanders away while operating a power tool.** *Distractions can cause you to lose control of the tool or workpiece.*

2. Electrical Safety

- a. **Power tool plugs must match the outlet. Never modify the plug in any way. Do not use any adapter plugs with earthed (grounded) power tools.** *Unmodified plugs and matching outlets will reduce risk of electric shock.*
- b. **Avoid body contact with earthed or grounded surfaces, such as pipes, radiators, ranges and refrigerators.** *There is an increased risk of electric shock if your body is earthed or grounded.*
- c. **Do not expose power tools to rain or wet conditions.** *Water entering a power tool will increase the risk of electric shock.*
- d. **Do not abuse the cord. Never use the cord for carrying, pulling or unplugging the power tool. Keep cord away from heat, oil, sharp edges or moving parts.** *Damaged or entangled cords increase the risk of electric shock.*
- e. **When operating a power tool outdoors, use an extension cord suitable for outdoor use.** *Use of a cord suitable for*

outdoor use reduces the risk of electric shock.

- f. **If operating a power tool in a damp location is unavoidable, use a residual current device (RCD) protected supply.** *Use of an RCD reduces the risk of electric shock.*

NOTE The term “residual current device (RCD)” can be replaced by the term “ground fault circuit interrupter (GFCI)” or “earth leakage circuit breaker (ELCB)”.

3. Personal Safety

- a. **Stay alert, watch what you are doing and use common sense when operating a power tool. Do not use a power tool while you are tired or under the influence of drugs, alcohol or medication.** *A moment of inattention while operating power tools may result in serious personal injury.*
- b. **Use personal protective equipment. Always wear eye protection.** *Protective equipment such as a dust mask, non-skid safety shoes, hard hat or hearing protection used for appropriate conditions will reduce personal injuries.*
- c. **Prevent unintentional starting. Ensure the switch is in the off-position before connecting to power source and/or battery pack, picking up or carrying the tool.** *Carrying power tools with your finger on the switch or energizing power tools that have the switch on invites accidents.*
- d. **Remove any adjusting key or wrench before turning the power tool on. A wrench or a key left attached to a rotating part of the power tool may result in personal injury.**
- e. **Do not overreach. Keep proper footing and balance at all times.** *This enables better control of the power tool in unexpected situations.*
- f. **Dress properly. Do not wear loose clothing or jewelry. Keep your hair and clothing away from moving parts.** *Loose clothes, jewelry or long hair can be caught in moving parts.*
- g. **If devices are provided for the connection of dust extraction and collection facilities, ensure these are connected and properly used.** *Use of dust collection can reduce dust-related hazards.*
- h. **Do not let familiarity gained from frequent use of tools allow you to become complacent and ignore tool**

safety principles. *A careless action can cause severe injury within a fraction of a second.*

4. Power Tool Use And Care

- a. **Do not force the power tool. Use the correct power tool for your application.** *The correct power tool will do the job better and safer at the rate for which it was designed.*
- b. **Do not use the power tool if the switch does not turn it on and off.** *Any power tool that cannot be controlled with the switch is dangerous and must be repaired.*
- c. **Disconnect the plug from the power source and/or remove the battery pack, if detachable, from the power tool before making any adjustments, changing accessories, or storing power tools.** *Such preventive safety measures reduce the risk of starting the power tool accidentally.*
- d. **Store idle power tools out of the reach of children and do not allow persons unfamiliar with the power tool or these instructions to operate the power tool.** *Power tools are dangerous in the hands of untrained users.*
- e. **Maintain power tools and accessories. Check for misalignment or binding of moving parts, breakage of parts and any other condition that may affect the power tool's operation. If damaged, have the power tool repaired before use.** *Many accidents are caused by poorly maintained power tools.*
- f. **Keep cutting tools sharp and clean.** *Properly maintained cutting tools with sharp cutting edges are less likely to bind and are easier to control.*
- g. **Use the power tool, accessories and tool bits etc. in accordance with these instructions, taking into account the working conditions and the work to be performed.** *Use of the power tool for operations different from those intended could result in a hazardous situation.*
- h. **Keep handles and grasping surfaces dry, clean and free from oil and grease.** *Slippery handles and grasping surfaces do not allow for safe handling and control of the tool in unexpected situations.*

5. Battery Tool Use And Care

- a. **Recharge only with the charger specified by the manufacturer.** *A charger that is suitable for one type of battery pack may create a risk of fire when used with another battery pack.*
- b. **Use power tools only with specifically designated battery packs.** *Use of any other battery packs may create a risk of injury and fire.*
- c. **When battery pack is not in use, keep it away from other metal objects such as paper clips, coins, keys, nails, screws or other small metal objects that can make a connection from one terminal to another.** *Shorting the battery terminals together may cause burns or a fire.*
- d. **Under abusive conditions, liquid may be ejected from the battery; avoid contact.** *If contact accidentally occurs, flush with water. If liquid contacts eyes, seek additional medical help. Liquid ejected from the battery may cause irritation or burns.*
- e. **Do not use a battery pack or tool that is damaged or modified.** *Damaged or modified batteries may exhibit unpredictable behavior resulting in fire, explosion or risk of injury.*
- f. **Do not expose a battery pack or tool to fire or excessive temperature.** *Exposure to fire or temperature above 100°C may cause explosion.*
- g. **Follow all charging instructions and do not charge the battery pack or tool outside the temperature range specified in the instructions.** *Charging improperly or at temperatures outside the specified range may damage the battery and increase the risk of fire.*

6. Service

- a. **Have your power tool serviced by a qualified repair person using only identical replacement parts.** *This will ensure that the safety of the power tool is maintained.*
- b. **Never service damaged battery packs.** *Service of battery packs should only be performed by the manufacturer or authorized service providers.*

HEDGE TRIMMER SAFETY WARNINGS

- a. **Do not use the hedge trimmer in bad weather conditions, especially when**

there is a risk of lightning. This decreases the risk of being struck by lightning.

- b. **Keep all power cords and cables away from cutting area.** Power cords or cables may be hidden in hedges or bushes and can be accidentally cut by the blade.
- c. **Wear ear protection.** Adequate protective equipment will reduce the risk of hearing loss.
- d. **Hold the hedge trimmer by insulated gripping surfaces only, because the blade may contact hidden wiring.** Blades contacting a "live" wire may make exposed metal parts of the hedge trimmer "live" and could give the operator an electric shock.
- e. **Keep all parts of the body away from the blade. Do not remove cut material or hold material to be cut when blades are moving.** Blades continue to move after the switch is turned off. A moment of inattention while operating the hedge trimmer may result in serious personal injury.
- f. **When clearing jammed material or servicing the hedge trimmer, make sure all power switches are off and the battery pack is removed or disconnected.** Unexpected actuation of the hedge trimmer while clearing jammed material or servicing may result in serious personal injury.
- g. **Carry the hedge trimmer by the handle with the blade stopped and taking care not to operate any power switch.** Proper carrying of the hedge trimmer will decrease the risk of inadvertent starting and resultant personal injury from the blades.
- h. **When transporting or storing the hedge trimmer, always use the blade cover.** Proper handling of the hedge trimmer will decrease the risk of personal injury from the blades.

GRASS SHEARS SAFETY WARNINGS

- a. **Do not use the grass shear in bad weather conditions, especially when there is a risk of lightning.** This decreases the risk of being struck by lightning.
- b. **Keep all power cords and cables away from cutting area.** Power cords or cables may be hidden and can be accidentally cut by the blade.
- c. **Wear ear protection.** Adequate protective equipment will reduce the risk of hearing loss.
- d. **Hold the grass shear by insulated**

gripping surfaces only, because the blade may contact hidden wiring. Blades contacting a "live" wire may make exposed metal parts of the grass shear "live" and could give the operator an electric shock.

- e. **Keep all parts of the body away from the blade. Do not remove cut material or hold material to be cut when blades are moving.** Blades continue to move after the switch is turned off. A moment of inattention while operating the grass shear may result in serious personal injury.
- f. **When clearing jammed material or servicing the grass shear, make sure the power switch is off and the battery pack is removed or disconnected.** Unexpected actuation of the grass shear while clearing jammed material or servicing may result in serious personal injury.
- g. **Carry the grass shear by the handle with the blade stopped and taking care not to operate the power switch.** Proper carrying of the grass shear will decrease the risk of inadvertent starting and resultant personal injury from the blades.
- h. **When transporting or storing the grass shear, always use the blade cover.** Proper handling of the grass shear will decrease the risk of personal injury from the blades.



WARNING!

Only use following batteries: B20X2/B25X2/B40X2/B50X2/B60X2/B80X2 and chargers: CHX2/CHQX2/CHQX2-M-EU/CHDX2-M-EU.

VIBRATION + NOISE REDUCTION

To reduce the impact of noise and vibration emission, limit the time of operation, use low-vibration and low-noise operating modes as well as wear personal protective equipment. Take the following points into account to minimise the vibration and noise exposure risks.

- Only use the product as intended by its design and these instructions.
- Ensure that the product is in good condition and well maintained.
- Use correct attachments for the product and ensure they are in good condition.
- Keep tight grip on the handles/grip surface.
- Maintain this product in accordance with these instructions and keep it well

- lubricated (where appropriate).
- Plan your work schedule to spread any high vibration tool use across a longer period of time.

EMERGENCY

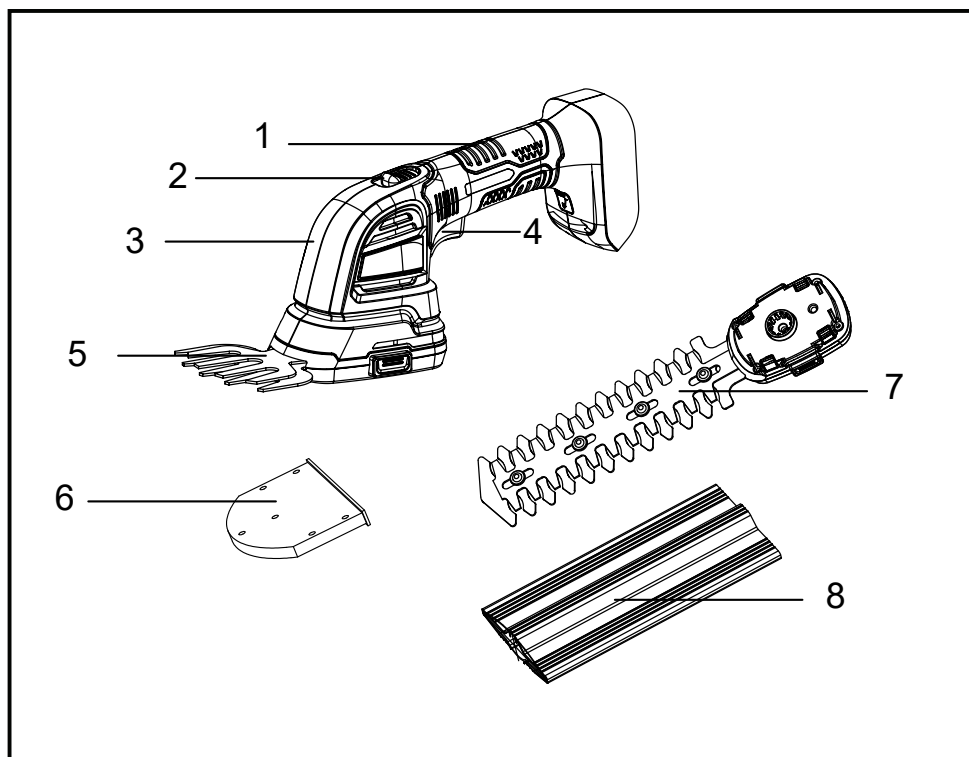
Familiarize yourself with the use of this product by means of this instruction manual. Memorize the safety directions and follow them to the letter. This will help to prevent risks and hazards.

- Always be alert when using this product, so that you can recognize and handle risks early. Fast intervention can prevent serious injury and damage to property.
- Switch off the product and remove the battery pack if there are malfunctions. Have the product checked by a qualified professional and repaired, if necessary, before you operate it again.

INTENDED USE

This product is only intended to be used for trimming hedges, shrubs and grass, and can be used easily in your garden. Do not use it for other purposes.

KNOW YOUR UNIT



APPLICATIONS

Model: GSX2-M-EU

As a shrub shear/grass shear:
trimming hedges, shrubs and grass in
domestic garden.

1	Handle
2	Safety lock-off button
3	Motor housing
4	ON/OFF trigger

5	Grass shear blade attachment
6	Grass shear blade sheath
7	Hedge trimmer blade attachment
8	Hedge trimmer blade sheath

SPECIFICATIONS*

Model	GSX2-M-EU
Input voltage	18 V \approx (20 V \approx Max*)
Strokes	1 250spm 1 250 cpm
Cutting Width Of Grass Shear	10 cm
Cutting Capacity Of Grass Shear	2.5 cm
Cutting Capacity Of Shrub Shearde Coupe	1.6 cm
Cutting Length Of Shrub Shear	20 cm
Weight (Tool Only)	0.96 kg

*20V Max battery, maximum initial battery voltage (measured without a workload) is 20V. The nominal voltage is 18V.

ASSEMBLY

1. Unpack all parts and lay them on a flat, stable surface:
2. Remove all packing materials and shipping devices, if applicable.
3. The scope of delivery varies depending on the country and purchased variant:
Model of GSX2-M-EU
 - Grass Shears X1
 - Hedge Trimmer Blade Attachment X1
 - Instruction Manual X1
4. If you find that parts are missing or show damage do not use the product and contact your dealer. Using an incomplete or damaged product represents a hazard to people and property.
5. Ensure that you have all the accessories and tools needed for assembly and operation. This also includes suitable personal protective equipment.



WARNING:



Wear protective gloves for this assembly work and always lay the product on a flat and stable surface while assembling. Follow the assembly instructions step-by-step and use the pictures provided as a visual guide to easily assemble the product! Do not insert the battery pack before the power tool is completely assembled or adjusted!

BLADE ATTACHMENTS



WARNING:

Only use attachments supplied from the manufacturer on this tool.

To install:

Press two fasteners, then align and match the shaft with the shaft hole. The attachment will be locked in place after releasing two fasteners.

To remove:

Unlock the engagement by pressing two fasteners. Dismantle the blade attachment from tool.

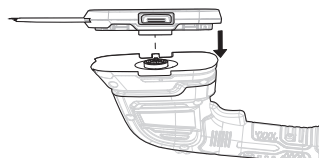
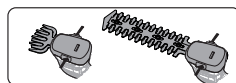


Fig. 1

BATTERY PACK

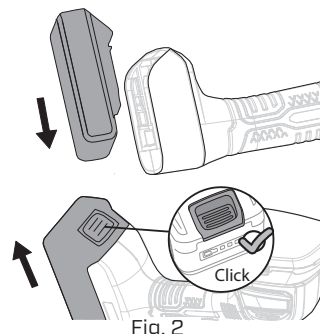


WARNING:

Make sure the battery pack is locked in docking port before operation. Failure to firmly seat the battery pack could cause the battery pack to fall out, resulting in serious personal injury.

To install :
Align and slide battery pack to battery docking port until it locks in place.

To remove :
Press the rail lock release button on battery pack and slide the battery pack out of docking port.



OPERATION



WARNING:

Always wear eye, hearing, hand protection to reduce the risk of injury when operating the tool.



WARNING:

This product is designed for hand use, this product should never be installed on a workbench or any other support.

- Check the product as well as accessories for damage before each use. Do not use the product if it is damaged or shows wear.
- Double check that the accessories and attachments are properly fixed.
- Always hold the product on its handle. Keep the handle dry to ensure safe support.
- Ensure that the air vents are always unobstructed and clear. Clean them if necessary with a soft brush. Blocked air vents may lead to overheating and damage the product.
- Switch the product off immediately if you are disturbed while working by other people entering the working area. Always let the product come to complete stop before putting it down.
- Do not overwork yourself. Take regular breaks to ensure you can concentrate on the work and have full control over the product.
- Before switching the product on, check whether it has been assembled correctly and all the moving parts are running smoothly.
- We recommend slightly dampening surfaces in dusty conditions or using a moist attachment.
- Operate the product only at reasonable hours – not early in the morning or late at night when people might be disturbed.
- Avoid using the product in bad weather conditions, especially when there is a risk of lightning. Do not operate the product in poor lighting. The operator requires a clear view of the work area to identify potential hazards.
- Operating similar tools nearby increases both the risk of hearing injury and the potential for other persons to enter your work area.
- Keep firm footing and balance.
- Do not overreach. Overreaching can result in loss of balance. Always be sure of the footing on slopes.
- Walk, never run. Keep all parts of your body away from any moving part.
- Never run the product without the proper equipment attached.
- Do not modify the product in any way or use parts and accessories that are not recommended by the manufacturer.
- Do not touch moving hazardous parts before the machine is disconnected from the mains and the moving hazardous parts have come to a complete stop.
- Do not force the blades through dense growth. If the blades slow down, then reduce your cutting pace. Should the blades jam, release the trigger immediately.
- Do not use your fingers to free up jammed blades. Jammed blades can release suddenly causing serious injury. Never touch the blade rail while in operation and be aware of sharp edges even when the battery grass shear is not in use.

SWITCHING ON/OFF



WARNING:

Ensure the blade does not touch any objects

before turning ON.

To turn the tool on, push and hold the safety lock-off button with your thumb, then pull the ON/OFF trigger with your forefinger. Once the tool starts, you can release the safety lock-off button and proceed with operation.

To turn the tool off, release the ON/OFF trigger.

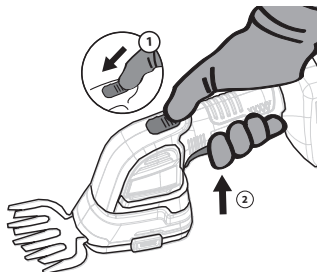


Fig. 3

GENERAL OPERATION

The tool with shrub shear blade attachment can be used to trim branches whose diameter is less than 8mm (0.31 inch).

For shrubs or hedges require substantial cut, it's favorable to cut thicker branches beforehand by a hedge trimmer with larger cutting capacity. Then use the tool for further cut.

To shape precisely, run a taught line between the extreme edges of the hedge and then trim along the length of the line.

When trimming a extend lawn area, it's recommended to have it trimmed using a professional grass trimmer first. Then do minor betterment by the tool with grass shear blade attachment.

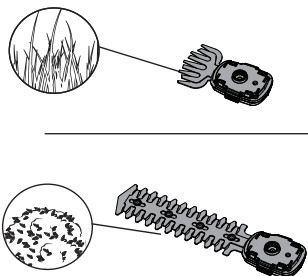


Fig. 4



WARNING:

Never expose blades to hard materials, such as fencing wires or metallic plant supports to protect it from damage.

CUTTING TIPS

1. Shaping

The hedge should be trimmed to achieve a trapezoidal form, it should widen toward the bottom at both sides. This improves the penetration of light to the lower extremities. A general guideline is approximately 10cm (3.9inch) slant for each 1 meter of hedge height.

2. Cutting Sequence

First cut both sides, starting at the bottom and working to the top. This prevents cuttings from falling into the area where you are still to work.

3. Trimming the top

Where the branches have grown extremely long, cut back the hedge in several stages. The shorter cuttings obtained are better suited for composting.

OVERHEAT PROTECTION

When the tool/battery is overheated, the tool stops automatically. In this situation, let the power tool/battery cool before turning the tool on again.

OVERDISCHARGE PROTECTION

When the battery capacity is not enough, the tool stops automatically. In this case, remove the battery from the tool and charge the battery.

MAINTENANCE



WARNING:

Only perform cleaning and maintenance work according to these instructions!
All further works must be performed by a qualified specialist!



WARNING:

TO PREVENT SERIOUS INJURY FROM ACCIDENTAL OPERATION:

Make sure the battery pack is removed before

performing any procedure in this section.
TO PREVENT SERIOUS INJURY FROM TOOL FAILURE:

Do not use damaged equipments.
If abnormal noise or vibration occurs, have the problem corrected before further use.

CLEANING

1. Keep all safety devices, air vents, and motor housing free of debris and dirt.
2. Wipe up residue with a cloth or sponge.
3. Never flush the tool with water.



NOTE:

Do not use cleaning agents, as these can attack the plastic and weaken the structural integrity of the grass shear.

TRANSPORT

1. Switch the product off and remove the battery.
2. Attach blade sheaths.
3. Protect the product from any heavy impact or strong vibrations which may occur during transportation in vehicles.
4. Secure the product to prevent it from slipping or falling over.

STORAGE

1. Clean thoroughly as described above.
2. Store in a clean, dry, frost-free and well-ventilated area that is inaccessible to children.
3. The ideal storage temperature is between 10°C (50°F) and 30°C (86°F).
4. Do not expose to sunlight.
5. Use original package or cover with a suitable cloth to protect it against dust.



NOTE:

To prolong battery life, store the battery pack separately from the tool in a 30%-50% charged condition. It's recommended to have your battery pack charged at least every 6 months.

DISPOSAL

Waste product should not be disposed of with household waste. Please recycle where

facilities exist.

Check with your local authority or retailer for recycling advice.

Grasses or branches may be cut by the unit during operation, users should clean these objects to protect environment.



Electrical products should not be discarded with household products. Used electrical products must be collected separately and disposed of at collection points provided for this purpose. Talk with your local authorities or dealer for advice on recycling.

TROUBLESHOOTING

Suspected malfunctions are often due to causes that the users can fix themselves. Therefore, check the product using this section. In most cases the problem can be solved quickly.

PROBLEM	POSSIBLE CAUSE	SOLUTION
Product does not start	Battery pack not properly attached	Attach properly
	Wrong startup steps	Refer to “SWITCHING ON/OFF”
Product does not reach full power	Battery capacity too low	Charge battery
Vibration or noise is excessive	Bolts/nuts are loose	Tighten bolts/nuts
Product suddenly stops	Battery discharged	Charge battery pack
	Battery too hot	Let it cool down