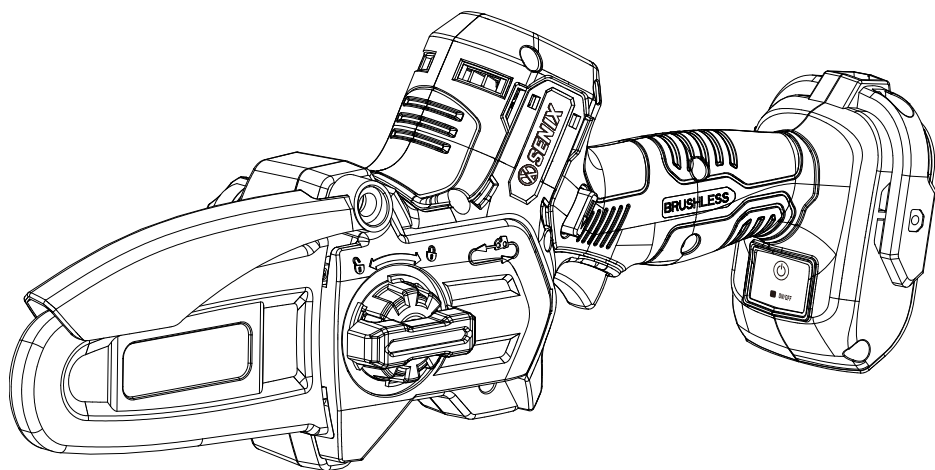




CORDLESS PRUNING SAW



CAUTION: Before using this tool, please read this manual completely, and follow all operating safety measures.

- SAFETY
- ASSEMBLY
- OPERATION
- MAINTENANCE

Senix Australia Pty Ltd. 32/3 Westside Avenue, #Port Melbourne, Victoria, 3207
For customer support, please call 1300 461 825 or email us at info@senixtool.com

TABLE OF CONTENTS

SAFETY & INTERNATIONAL SYMBOLS.....	2
SAFETY INSTRUCTIONS.....	3
KNOW YOUR UNIT	8
SPECIFICATIONS	9
ASSEMBLY.....	9
OPERATION.....	11
MAINTENANCE.....	12
TROUBLESHOOTING.....	14

SAFETY & INTERNATIONAL SYMBOLS

Explanation of safety & international symbols describes safety and international symbols and pictographs that may appear on this product. Read the operator's manual for complete safety, assembly, operating and maintenance and repair information.



Caution / Warning.



To reduce the risk of injury, user must read instruction manual.



Wear eye protection.



Wear hearing protection.



Wear respiratory protection.



Wear protective gloves.



Do not expose to rain.



DANGER – Keep hands away from blade.



Avoid power lines, use in dry conditions.



Keep all bystanders at least 15m (50 ft.) away.



Thrown objects can ricochet and result in personal injury or property damage.



Beware of pruning saw kickback and avoid contact with bar tip.



Always use pruning saw two-handed.



Do not dispose of battery packs in rivers or immerse in water.



Do not dispose of battery packs in fire. They will explode and cause injury.



Use and store the battery at a temperature below 50°C (122°F)



Do not disassemble, crush or expose to heat above 100°C (212°F); Never expose the battery to microwaves or high pressures.



Waste electrical products should not be disposed of with household waste. Please recycle where facilities exist. Check with your Local Authority or local store for recycling advice.



Crossed out dust bin. Batteries and battery packs should not be disposed of with household waste. Please recycle where facilities exist. Check with your Local Authority or local store for recycling advice.



RCM Mark

SAFETY INSTRUCTIONS

GENERAL POWER TOOL SAFETY WARNINGS



WARNING!

Read all safety warnings, instructions, illustrations and specifications provided with this power tool. Failure to follow all instructions listed below may result in electric shock, fire and/or serious injury.

Save all warnings and instructions for future reference.

The term "power tool" in the warnings refers to your mains-operated (corded) power tool or battery-operated (cordless) power tool.

1. Work Area Safety

- a. **Keep work area clean and well lit.**
Cluttered or dark areas invite accidents.
- b. **Do not operate power tools in explosive atmospheres, such as in the presence of flammable liquids, gases or dust.**
Power tools create sparks which may ignite the dust or fumes.
- c. **Keep children and bystanders away while operating a power tool.**
Distractions can cause you to lose control of the tool or workpiece.

2. Electrical Safety

- a. **Power tool plugs must match the outlet. Never modify the plug in any way. Do not use any adapter plugs with earthed (grounded) power tools.** *Unmodified plugs and matching outlets will reduce risk of electric shock.*
- b. **Avoid body contact with earthed or grounded surfaces, such as pipes, radiators, ranges and refrigerators.**
There is an increased risk of electric shock if your body is earthed or grounded.
- c. **Do not expose power tools to rain or wet conditions.** *Water entering a power tool will increase the risk of electric shock.*
- d. **Do not abuse the cord. Never use the cord for carrying, pulling or unplugging the power tool. Keep cord away from heat, oil, sharp edges or moving parts.** *Damaged or entangled cords increase the risk of electric shock.*
- e. **When operating a power tool outdoors, use an extension cord suitable for outdoor use.** *Use of a cord suitable for*

outdoor use reduces the risk of electric shock.

- f. **If operating a power tool in a damp location is unavoidable, use a residual current device (RCD) protected supply.** *Use of an RCD reduces the risk of electric shock.*
- NOTE The term "residual current device (RCD)" can be replaced by the term "ground fault circuit interrupter (GFCI)" or "earth leakage circuit breaker (ELCB)".
- 3. **Personal Safety**
 - a. **Stay alert, watch what you are doing and use common sense when operating a power tool. Do not use a power tool while you are tired or under the influence of drugs, alcohol or medication.** *A moment of inattention while operating power tools may result in serious personal injury.*
 - b. **Use personal protective equipment. Always wear eye protection.** *Protective equipment such as a dust mask, non-skid safety shoes, hard hat or hearing protection used for appropriate conditions will reduce personal injuries.*
 - c. **Prevent unintentional starting. Ensure the switch is in the off-position before connecting to power source and/or battery pack, picking up or carrying the tool.** *Carrying power tools with your finger on the switch or energizing power tools that have the switch on invites accidents.*
 - d. **Remove any adjusting key or wrench before turning the power tool on.** *A wrench or a key left attached to a rotating part of the power tool may result in personal injury.*
 - e. **Do not overreach. Keep proper footing and balance at all times.** *This enables better control of the power tool in unexpected situations.*
 - f. **Dress properly. Do not wear loose clothing or jewelry. Keep your hair and clothing away from moving parts.** *Loose clothes, jewelry or long hair can be caught in moving parts.*
 - g. **If devices are provided for the connection of dust extraction and collection facilities, ensure these are connected and properly used.** *Use of dust collection can reduce dust-related hazards.*
 - h. **Do not let familiarity gained from**

- frequent use of tools allow you to become complacent and ignore tool safety principles.** *A careless action can cause severe injury within a fraction of a second.*
4. **Power Tool Use And Care**
 - a. **Do not force the power tool. Use the correct power tool for your application.** *The correct power tool will do the job better and safer at the rate for which it was designed.*
 - b. **Do not use the power tool if the switch does not turn it on and off.** *Any power tool that cannot be controlled with the switch is dangerous and must be repaired.*
 - c. **Disconnect the plug from the power source and/or remove the battery pack, if detachable, from the power tool before making any adjustments, changing accessories, or storing power tools.** *Such preventive safety measures reduce the risk of starting the power tool accidentally.*
 - d. **Store idle power tools out of the reach of children and do not allow persons unfamiliar with the power tool or these instructions to operate the power tool.** *Power tools are dangerous in the hands of untrained users.*
 - e. **Maintain power tools and accessories. Check for misalignment or binding of moving parts, breakage of parts and any other condition that may affect the power tool's operation. If damaged, have the power tool repaired before use.** *Many accidents are caused by poorly maintained power tools.*
 - f. **Keep cutting tools sharp and clean.** *Properly maintained cutting tools with sharp cutting edges are less likely to bind and are easier to control.*
 - g. **Use the power tool, accessories and tool bits etc. in accordance with these instructions, taking into account the working conditions and the work to be performed.** *Use of the power tool for operations different from those intended could result in a hazardous situation.*
 - h. **Keep handles and grasping surfaces dry, clean and free from oil and grease.** *Slippery handles and grasping surfaces do not allow for safe handling and control of the tool in unexpected situations.*
 5. **Battery Tool Use And Care**
 - a. **Recharge only with the charger specified by the manufacturer.** *A charger that is suitable for one type of battery pack may create a risk of fire when used with another battery pack.*
 - b. **Use power tools only with specifically designated battery packs.** *Use of any other battery packs may create a risk of injury and fire.*
 - c. **When battery pack is not in use, keep it away from other metal objects such as paper clips, coins, keys, nails, screws or other small metal objects that can make a connection from one terminal to another.** *Shorting the battery terminals together may cause burns or a fire.*
 - d. **Under abusive conditions, liquid may be ejected from the battery; avoid contact.** *If contact accidentally occurs, flush with water. If liquid contacts eyes, seek additional medical help. Liquid ejected from the battery may cause irritation or burns.*
 - e. **Do not use a battery pack or tool that is damaged or modified.** *Damaged or modified batteries may exhibit unpredictable behavior resulting in fire, explosion or risk of injury.*
 - f. **Do not expose a battery pack or tool to fire or excessive temperature.** *Exposure to fire or temperature above 100°C (212°F) may cause explosion.*
 - g. **Follow all charging instructions and do not charge the battery pack or tool outside the temperature range specified in the instructions.** *Charging improperly or at temperatures outside the specified range may damage the battery and increase the risk of fire.*
 6. **Service**
 - a. **Have your power tool serviced by a qualified repair person using only identical replacement parts.** *This will ensure that the safety of the power tool is maintained.*
 - b. **Never service damaged battery packs.** *Service of battery packs should only be performed by the manufacturer or authorized service providers.*



WARNING!

Only use following batteries: B20X2/B25X2/B40X2/B50X2/B60X2/B80X2 and chargers: CHX2/CHQX2/CHQX2-M-EU/CHDX2-M-EU.

PRUNING SAW SAFETY WARNINGS

- a. **Keep all parts of the body away from the saw chain while operating the pruning saw.** *Before you start the pruning saw, make sure the saw chain is not contacting anything. A moment of inattention while operating a pruning saw may cause entanglement of your clothing or body with the saw chain.*
- b. **Always hold the pruning saw with your dominant hand on the main handle, and your secondary hand on the front brace.** *This provides the most support when making cuts, and will help prevent injury.*
- c. **Hold the pruning saw by insulated gripping surfaces only, because the saw chain may contact hidden wiring or its own cord.** *Saw chains contacting a "live" wire may make exposed metal parts of the saw "live" and could give the operator an electric shock.*
- d. **Always wear eye protection. Additional protective equipment for ears, head, hands, legs and feet are recommended.** *Adequate protective equipment will reduce personal injury from flying debris or accidental contact with the saw chain.*
- e. **Do not operate a pruning saw while in a tree, on a ladder, from a rooftop, or while standing on any unstable surface.** *Operation of a pruning saw in this manner could result in serious personal injury.*
- f. **Always keep proper footing and operate the pruning saw only when standing on a fixed, secure, and level surface.** *Slippery or unstable surfaces such as ladders can cause a loss of balance or control of the pruning saw.*
- g. **When cutting a limb that is under tension, be alert for spring back.** *When tension in the wood fibers is released, the spring loaded limb may strike the operator and/or throw the pruning saw out of control.*
- h. **Use extreme caution when cutting brush and saplings.** *The slender material may catch the saw chain and be whipped toward you or pull you off balance.*
- i. **Carry the pruning saw by the handle with the tool switched off and away from your body.** *When transporting or storing the pruning saw, always place the guide bar cover over the bar and chain. Proper handling of the pruning saw will reduce the likelihood of accidental contact with the moving saw chain.*
- j. **Follow instructions when lubricating or tensioning the chain, and when changing accessories.** *Improperly tensioned or lubricated chain could break the pruning chain.*
- k. **Keep handles dry, clean, and free from oil and grease.** *Greasy, oily handles are slippery and can cause loss of control.*
- l. **Do not use pruning saw for purposes not outlined in this manual.** *For cutting wood only. Do not use pruning saw for cutting metal, plastic, masonry or non-wood building materials. Use of the pruning saw for operations different than intended could result in a hazardous situation.*
- m. **Maintain a firm grip, with thumbs and fingers encircling the handles and both hands on the pruning saw.** *Maintaining control of the pruning saw will reduce the risk of losing control. Do not let go of the pruning saw.*
- n. **Do not overreach and do not cut above shoulder height.** *This enables better control of the pruning saw in unexpected situations.*
- o. **Only use replacement bars and chains specified by the manufacturer.** *Incorrect replacement bars and chains can cause chain breakage and increase the risk of injury.*
- p. **Follow the manufacturer's sharpening and maintenance instructions for the pruning saw chain.** *Decreasing the depth gauge height can lead to increased risk of injury.*

CAUSES AND OPERATOR PREVENTION OF KICKBACK

Kickback may occur when the nose or tip of the guide bar touches an object, or when the wood closes in and pinches the saw chain in the cut. Tip contact in some cases may cause a sudden reverse reaction, kicking the guide bar up and back towards the operator. Pinching the saw chain along the top of the guide bar may push the guide bar rapidly back towards the operator. Either of these reactions may cause you to lose control of the saw which could result in serious personal injury. Do not rely exclusively upon the safety devices built into your saw. As a chainsaw user, you should take several steps to keep your cutting jobs free from

accident or injury.

Kickback is the result of chainsaw misuse and/or incorrect operating procedures or conditions and can be avoided by taking proper precautions as given below:

- a. **Maintain a firm grip, with thumbs and fingers encircling the pruning saw handles and both hands on the saw. Position your body and arm to allow you to resist kickback forces.** *Kickback forces can be controlled by the operator if proper precautions are taken. Do not let go of the pruning saw.*
- b. **Do not overreach and do not cut above shoulder height.** *This helps prevent unintended tip contact and enables better control of the pruning saw in unexpected situations.*
- c. **Only use replacement bars and chains specified by the manufacturer.** *Incorrect replacement guide bars and saw chains may cause chain breakage and/or kickback.*
- d. **Follow the manufacturer's sharpening and maintenance instructions for the saw chain.** *Decreasing the depth gauge height can lead to increased kickback.*

RESIDUAL RISKS

Even with the intended use of the appliance there will always be a residual risk that cannot be prevented when using this tool, even when used properly and for its intended purpose. Due to the type and construction of this tool, the following potential hazards might apply:

- Contact with exposed saw teeth of the saw chain
- Access to the rotating saw chain
- Unforeseen, abrupt movement of the guide bar
- Debris from a damaged or broken saw chain
- Dust and debris flung from the work piece
- Contact with hot chain oil
- Loss of hearing due to lack of ear protection

SAFETY WARNINGS FOR BATTERY PACK EMERGENCY

- a. **Do not dismantle, open or otherwise damage cells or battery pack.**
- b. **Do not short-circuit a battery pack. Do not store battery packs haphazardly in**

a box or drawer where they may short-circuit each other or be short-circuited by conductive materials. When battery pack is not in use, keep it away from other metal objects such as paper clips, coins, keys, nails, screws or other small metal objects that can make a connection from one terminal to another. Shorting the battery terminals together may cause burns or a fire.

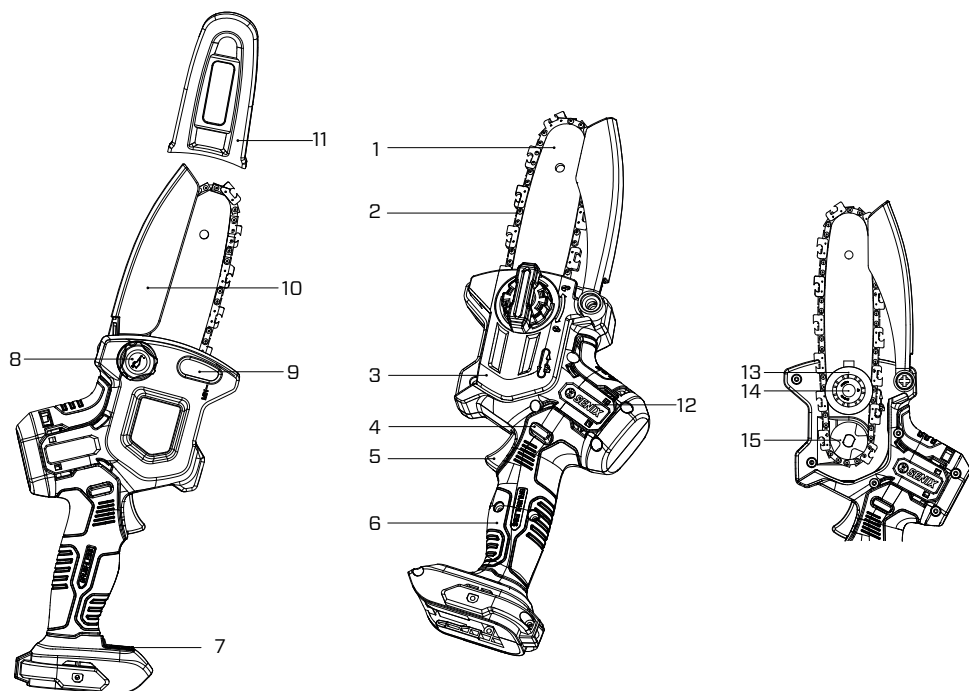
- c. **Do not expose battery pack to heat or fire.** *Avoid storage in direct sunlight.*
- d. **Do not subject battery pack to electrical shock.**
- e. **Under abusive conditions, liquid may be ejected from the battery; avoid contact.** If contact accidentally occurs, flush with water. If liquid contacts eyes, seek additional medical help.
- f. **Seek immediate medical help if a cell or battery pack has been swallowed.**
- g. **Keep battery pack clean and dry.**
- h. **Wipe the battery pack terminals with a clean dry cloth if they become dirty.**
- i. **Battery pack needs to be charged before use.** Always refer to this instruction and use the correct charging procedure.
- j. **Remove battery pack from charger when not in use.**
- k. **After extended periods of storage, it may be necessary to charge and discharge the battery pack several times to obtain maximum performance.**
- l. **Battery pack gives its best performance when it is operated at normal room temperature (20 °C ± 5 °C).**
- m. **When disposing of battery packs, keep battery packs of different electrochemical systems separate from each other.**
- n. **Recharge only with the charger specified by the manufacturer.** A charger that is suitable for one type of battery pack may create a risk of fire when used with another battery pack.
- o. **Do not use any battery pack that is not designed for use with this tool**
- p. **Keep battery pack out of the reach of children.**
- q. **Retain the original product literature for future reference.**
- r. **Remove the battery from the tool when not in use.**
- s. **Properly dispose of any damaged or defective batteries according to local regulations.**

- t. **Do not remove battery pack from its original packaging until required for use.**
- u. **Observe the plus (+) and minus (-) marks on the battery and ensure correct use.**

INTENDED USE

- The pruning saw is intended for cutting only wood and branches up to a diameter corresponding to the length of the pruning saw guide bar.
- The pruning saw must be used at ground level or from a suitable platform that is completely stable and secure.
- During use, the pruning saw should be held with a firm grip and with both hands in the appropriate grip areas.
- The pruning saw is intended for outdoor use only.
- The pruning saw is not intended for any use other than those outlined in this manual.
- Mounting of parts on the pruning saw is authorized only for original or manufacturer-approved spare parts (chain guides or saw chains for example) as well as for authorized chain guide / saw chain combinations as indicated in the manual.
- The user is responsible for any accident resulting from improper use or unauthorized modification of the pruning saw.

KNOW YOUR UNIT



APPLICATIONS

Model: CSX2-M5-EU

As a pruning saw :

Limbing, felling and woodcutting.

1	Guide Bar
2	Chain
3	Side Cover
4	Safety Switch
5	Trigger
6	Handle
7	ON/OFF Switch
8	Oil Tank Cap

9	Oil Tank
10	Chain Guard
11	Guide Bar Cover
12	Secondary Grip Area
13	Chain Tensioning Gear
14	Housing Screw
15	Sprocket

SPECIFICATIONS

Model	CSX2-M5-EU
Rated Voltage	18 V \approx (20 V \approx Max*)
Rated Output	350 W
No-Load Speed	4 500 RPM
Chain Speed	8 m/s
Chain Pitch / Gauge	7.6 mm 1.1 mm
Chain & Bar Length	12 cm
Oil Tank Capacity	40 ml
Weight	1.1 kg

*20V Max battery, maximum initial battery voltage (measured without a workload) is 20V. The nominal voltage is 18V.

ASSEMBLY

1. Unpack all parts and lay them on a flat, stable surface:
2. Remove all packing materials and shipping devices, if applicable.
3. The scope of delivery varies depending on the country and purchased variant.
Model of CSX2-M5-EU
 - Pruning saw x1
 - Chain x1
 - Guide bar x1
 - Guide bar cover x1
 - Instruction manual x1
4. If you find that parts are missing or show damage do not use the product but contact your dealer. Using an incomplete or damaged product represents a hazard to people and property.
5. Ensure that you have all the accessories and tools needed for assembly and operation. This also includes suitable personal protective equipment.



WARNING!



Wear protective gloves for this assembly work and always lay the product on a flat and stable surface while assembling.



Follow the assembly instructions step-by-step and use the pictures provided as a visual guide to easily assemble the product! Do not insert the battery pack before the power tool is completely assembled or adjusted!

INSTALLING THE SAW CHAIN AND GUIDE BAR



WARNING!

Ensure the battery pack is removed from the pruning saw before attaching the bar and chain.

1. Fully loosen the chain tensioning knob counterclockwise. Then remove the side cover.

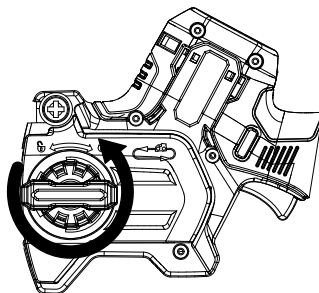


Fig. 1

2. Loop the new chain into the slot of the guide bar according to the directions.

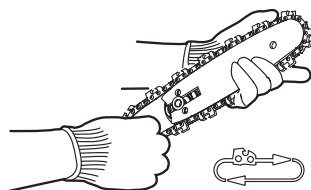
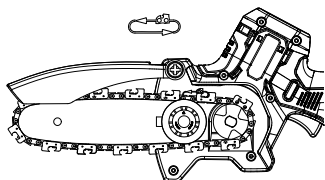


Fig. 2

3. Twist the chain tensioning gear counterclockwise. Then fit the guide bar assembly into the housing screw, and install the saw chain on the drive sprocket.



_____ Fig. 3 _____

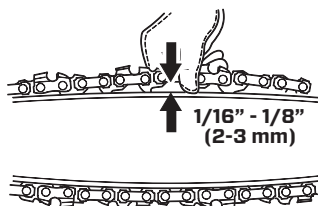
4. Pull the chain around the guide bar with your gloved hand or using auxiliary tools, then turn the chain tensioning gear clockwise to make sure it can run smoothly.



NOTE:

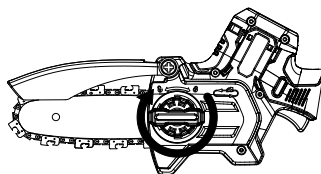
It is still recommended to check for smoothness of the saw chain before operation, even after using it for a period of time.

5. Replace the side cover and slightly tighten the locking knob. Ensure the saw chain does not slide out of the guide bar.
6. Twist the chain tensioning knob until the saw chain can be lifted 2-3 mm ($1/16''$ - $1/8''$) from the center of the guide bar.



_____ Fig. 4 _____

7. Fully tighten the chain tensioning knob clockwise.



_____ Fig. 5 _____



NOTE:

Allow the chain to cool after a short period of use, remove the battery, and check the tension again.

FILLING OIL



WARNING!

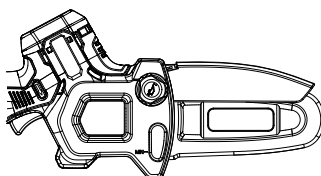
Bar and chain oil prevents premature wear. Never operate the pruning saw if oil is not visible. Check oil level frequently and fill as needed.



NOTE:

Bar and chain oil is required to properly lubricate the guide bar and saw chain. The pruning saw is equipped with an automatic oiler that deposits oil on the bar and chain when running, keeping them properly lubricated.

1. Place the pruning saw on its side on a firm, flat surface so that the oil tank cap is facing upward.
2. Clean any debris from the cap area.
3. Twist counterclockwise to remove the oil tank cap.



_____ Fig. 6 _____

- Carefully pour the oil into the tank.
- Replace the cap and make sure oil is visible in the tank.

INSTALLING/REMOVING THE BATTERY PACK

To install:

Slide the battery pack into the battery docking port on the product until it clicks.

To remove:

Press the battery-release button on the battery pack and slide the battery pack out.

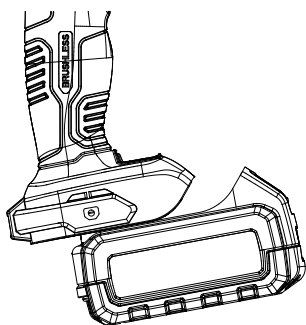


Fig. 7

OPERATION



WARNING!

Never operate a pruning saw that is damaged or improperly adjusted or that is not completely and securely assembled. Be sure that the saw chain stops moving when the power control system trigger is released. Never adjust the guide bar or saw chain while the tool is in use.

PRIMING THE OILER



WARNING!

Keep hands, clothing, and hair away from the drive sprocket when priming the oiler.



NOTE:

Prime the oiler before the first use or after being stored for a long time. It is essential to fill with oil before use. Operating the pruning saw without bar and chain oil will result

in damage to the pruning saw. The chain is automatically lubricated with oil during operation via the oil outlet.

- Insert the battery.
- Place the pruning saw on a firm, flat surface and run it for approximately two minutes.
- Check for an oil spray line coming off the guide bar and chain.

TENSIONING THE SAW CHAIN



NOTE:

Check the tension between the saw chain and the guide bar each time before using the pruning saw.



WARNING!

Only tension the saw chain when the chain is cool. A hot chain may contract and damage the guide bar or chain as it cools.

- It is not necessary to remove the side cover to adjust the chain tension. Simply turn the chain tensioning knob counterclockwise to increase.
- Twist the chain tensioning knob until the chain comes to a suitable tension level. The correct chain tension is reached when the saw chain can be lifted by 2-3 mm (1/16" - 1/8") from the center of the chain bar.
- Tighten the chain tensioning knob after adjustment.



NOTE:

If the chain is still loose when the saw is at maximum tension, replace the chain.

SWITCHING ON/OFF

- Press the ON/OFF switch button to unlock the pruning saw.
- Set the safety switch button to the "on" position.
- Push the trigger to start the tool.
- Release the trigger and safety switch button to stop the tool.

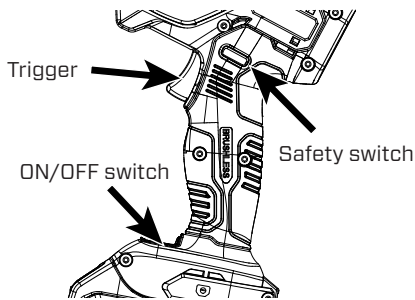


Fig. 8

OVERHEAT PROTECTION

This pruning saw has an overheat protection function. The tool will automatically shut down during operation when its internal temperature reaches an unsafe level. If this occurs, wait for it to cool down and then restart the tool.

GENERAL SAWING TECHNIQUES



NOTE:

It is recommended that first-time user should, as a basic practice, cut wood using a sawhorse or cradle.

- Remove lower branches on the tree first. By doing so, other cut branches can easily and safely fall to the ground.
- The saw will swing freely once it has fully passed through the cutting surface. Retain control of the saw when this occurs, and remain alert during the entire sawing operation to prevent risk of injury.
- Only pull the saw out of a cut while the saw is running. By doing so, you prevent the chain from jamming in the wood.
- DO NOT saw with the tip of the guide bar. DO NOT saw into a branch where the tree branches outwards. This will impede the tree's ability to heal.
- When sawing off smaller branches, place the stopped saw directly on the branch and engage the trigger. This will help to prevent unwanted movement at the beginning of the cut. While applying light pressure, guide the saw through the branch from top to bottom.
- When sawing off larger branches, first

make a relief cut. Saw through 1/3 of the branch diameter from the bottom to top using the top side of the guide bar. Then saw from top to bottom for the other 2/3 using the bottom side of the guide bar. Saw off longer branches in sections in order to maintain control over the location of impact.

MAINTENANCE



WARNING!

Failure to identify and replace damaged or worn parts can cause serious personal injury. Inspect the pruning saw regularly. Regular inspection is the first step to proper maintenance. Follow the guidelines below to maximize safety and satisfaction. Have any damaged or excessively worn parts replaced immediately.



WARNING!

Always remove the battery pack and let the product completely cool down before performing cleaning and maintenance work! Always wear gloves to reduce the risk of injury when operating this unit. Only perform cleaning and maintenance work according to these instructions! Any additional work must be performed by a qualified specialist!

REPLACING/CHANGING THE SAW CHAIN AND GUIDE BAR

Refer to "INSTALLING THE SAW CHAIN AND THE GUIDE BAR." Only use replacement parts listed by manufacturer.

SHARPENING THE CHAIN

Do not sharpen the pruning saw chain yourself unless you are experienced in doing so. It is recommended to have the pruning saw sharpened at an authorized service location or to replace the chain once it becomes worn.

CLEANING

- Remove the battery.
- Remove wood chips and other debris from the battery port. Clean dirty contacts with a soft, dry cloth. Dirt or oil can cause a poor electrical connection, resulting in loss of power.



WARNING!

There are no user serviceable parts inside the battery pack. Do not disassemble.

- After use, clean debris from the pruning saw and guide bar. Wipe power head with a clean cloth moistened with a mild soap solution. Never use harsh cleaners or solvents.
- Always clean out wood chips, saw dust and dirt from the bar groove when replacing saw chain.
- Ensure that the chain tensioning gear is free of wood chips and other debris.



NOTE:

When cleaning the pruning saw powerhead, do not immerse in water or other liquids.



NOTE:

To prolong battery life, never store battery pack in a completely discharged condition. Make sure the battery pack is charged every six months or when the LED indicator shows only one light.

DISPOSAL

Unwanted product should not be disposed of with household waste. Please recycle where facilities exist. Check with your local authority or retailer for recycling advice. Users should clean up dust generated during operation to protect environment.



Electrical products should not be discarded with household products. Used electrical products must be collected separately and disposed of at collection points provided for this purpose. Talk with your local authorities or dealer for advice on recycling.

TRANSPORTATION

- Remove battery pack from the pruning saw.
- Install the guide bar cover.
- If desired, drain the bar and chain oil to reduce seepage.
- Carry saw with bar and chain facing behind the operator.
- Tools can shift during transport. Ensure the tool is secure and cannot fall or move into contact with people or property.

STORAGE

- Remove the battery pack from the pruning saw.
- Clean pruning saw thoroughly as described above.
- Install the guide cover and place an absorbent pad under the bar.
- Store in a dry place.
- Keep out of reach of children or pets.
- We recommend using the original package for storage or covering the product with a suitable cloth or enclosure to protect it against dust.

TROUBLESHOOTING

Suspected malfunctions are often due to causes that users can fix themselves. Therefore, troubleshoot the product using this section. In most cases the problem can be solved quickly.

Problem	Possible Cause	Solution
Motor does not run	Battery pack capacity too low	Remove and charge battery pack
	Battery pack not properly attached	Remove from product and reattach
Low cutting efficiency	Dull / worn chain	Sharpen or replace the chain
	Dry chain	Check the oil level. Refer to "FILLING OIL"
	Insufficient chain tension	Refer to "TENSIONING THE SAW CHAIN"
	Improper cutting technique	Follow guidelines in this manual
	Debris in side cover	Remove battery pack, then remove side cover and clean out debris.
	Chain installed backwards	Refer to "INSTALLING THE SAW CHAIN AND THE GUIDE BAR"
Product does not cut properly	Insufficient chain tension	Refer to "TENSIONING THE SAW CHAIN"
	Dull / worn chain	Sharpen or replace the chain
	Chain installed backwards	Refer to "INSTALLING THE SAW CHAIN AND THE GUIDE BAR"
	Dry chain	Check the oil level. Refer to "FILLING OIL"
Product suddenly stops	Battery pack capacity too low	Remove and recharge battery pack
	The machine is overloaded	Release the trigger and restart the machine
Chain and guide bar overheating	Dry chain	Check the oil level. Refer to "FILLING OIL"

