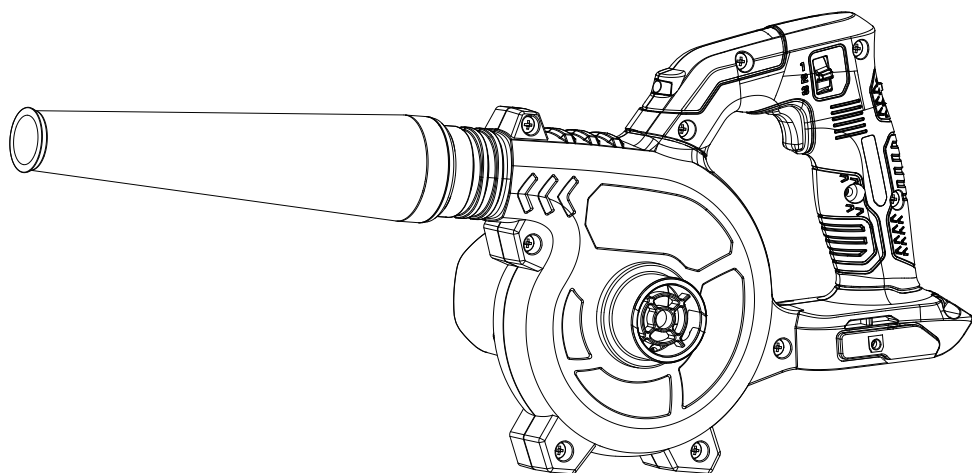




CORDLESS JOBSITE BLOWER



CAUTION: Before using this tool, please read this manual completely, and follow all operating safety measures.

- SAFETY
- ASSEMBLY
- OPERATION
- MAINTENANCE

Senix Australia Pty Ltd. 32/3 Westside Avenue, #Port Melbourne, Victoria, 3207
For customer support, please call **1300 461 825** or email us at info@senixtool.com

TABLE OF CONTENTS

SAFETY & INTERNATIONAL SYMBOLS.....	2
SAFETY INSTRUCTIONS.....	3
KNOW YOUR UNIT	6
SPECIFICATIONS	7
ASSEMBLY.....	7
OPERATION.....	8
MAINTENANCE.....	10
TROUBLESHOOTING.....	11

SAFETY & INTERNATIONAL SYMBOLS

Explanation of Safety & international symbols describes safety and international symbols and pictographs that may appear on this product. Read the operator's manual for complete safety, assembly, operating and maintenance and repair information.



Caution / Warning.



To reduce the risk of injury, user must read instruction manual.



Wear eye protection.



Wear hearing protection.



Wear respiratory protection.



Do not use in rain or wet conditions.



Wear protective gloves.



Wear sturdy, non-slip footwear.



Keep all bystanders at least 15 m (50 ft.) away.



Keep bystanders away.



Rotating blades. Keep hands and feet away from the openings, while the machine is running.



Do not dispose of battery packs in rivers or immerse in water.



Do not dispose of battery packs in fire. They will explode and cause injury.



Use the battery within a temperature below 50°C (122°F).



Do not disassemble, crush, heat above 100°C (212°F); Never expose the battery to microwaves or high pressures.



Indoor use only. Only use battery charger indoors.



RCM Mark

SAFETY INSTRUCTIONS

GENERAL POWER TOOL SAFETY WARNINGS



WARNING!

Read all safety warnings, instructions, illustrations and specifications, provided with this power tool. Failure to follow all instructions listed below may result in electric shock, fire and/or serious injury.

Save all warnings and instructions for future reference.

The term “power tool” in the warnings refers to your mains-operated (corded) power tool or battery-operated (cordless) power tool.

1) Work area safety

- a. **Keep work area clean and well lit.**
Cluttered or dark areas invite accidents.
- b. **Do not operate power tools in explosive atmospheres, such as in the presence of flammable liquids, gases or dust.**
Power tools create sparks which may ignite the dust or fumes.
- c. **Keep children and bystanders away while operating a power tool.**
Distractions can cause you to lose control.

2) Electrical safety

- a. **Power tool plugs must match the outlet. Never modify the plug in any way. Do not use any adapter plugs with earthed (grounded) power tools.**
Unmodified plugs and matching outlets will reduce risk of electric shock.
- b. **Avoid body contact with earthed or grounded surfaces, such as pipes, radiators, ranges and refrigerators.**
There is an increased risk of electric shock if your body is earthed or grounded.
- c. **Do not expose power tools to rain or wet conditions.**
Water entering a power tool will increase the risk of electric shock.
- d. **Do not abuse the cord. Never use the cord for carrying, pulling or unplugging the power tool. Keep cord away from heat, oil, sharp edges or moving parts.**
Damaged or entangled cords increase the risk of electric shock.
- e. **When operating a power tool outdoors, use an extension cord suitable for outdoor use.**
Use of a cord suitable for outdoor use reduces the risk of electric shock.

- f. **If operating a power tool in a damp location is unavoidable, use a residual current device (RCD) protected supply.**
Use of an RCD reduces the risk of electric shock.

3) Personal safety

- a. **Stay alert, watch what you are doing and use common sense when operating a power tool. Do not use a power tool while you are tired or under the influence of drugs, alcohol or medication.**
A moment of inattention while operating power tools may result in serious personal injury.
- b. **Use personal protective equipment. Always wear eye protection.**
Protective equipment such as a dust mask, non-skid safety shoes, hard hat or hearing protection used for appropriate conditions will reduce personal injuries.
- c. **Prevent unintentional starting. Ensure the switch is in the off-position before connecting to power source and/or battery pack, picking up or carrying the tool.**
Carrying power tools with your finger on the switch or energising power tools that have the switch on invites accidents.
- d. **Remove any adjusting key or wrench before turning the power tool on.**
A wrench or a key left attached to a rotating part of the power tool may result in personal injury.
- e. **Do not overreach. Keep proper footing and balance at all times.**
This enables better control of the power tool in unexpected situations.
- f. **Dress properly. Do not wear loose clothing or jewellery. Keep your hair and clothing away from moving parts.**
Loose clothes, jewellery or long hair can be caught in moving parts.
- g. **If devices are provided for the connection of dust extraction and collection facilities, ensure these are connected and properly used.**
Use of dust collection can reduce dust-related hazards.
- h. **Do not let familiarity gained from frequent use of tools allow you to become complacent and ignore tool safety principles.**
A careless action can cause severe injury within a fraction of a second.

4) Power tool use and care

- a. **Do not force the power tool. Use the correct power tool for your application.**
The correct power tool will do the job

better and safer at the rate for which it was designed.

- b. **Do not use the power tool if the switch does not turn it on and off.** Any power tool that cannot be controlled with the switch is dangerous and must be repaired.
- c. **Disconnect the plug from the power source and/or remove the battery pack, if detachable, from the power tool before making any adjustments, changing accessories, or storing power tools.** Such preventive safety measures reduce the risk of starting the power tool accidentally.
- d. **Store idle power tools out of the reach of children and do not allow persons unfamiliar with the power tool or these instructions to operate the power tool.** Power tools are dangerous in the hands of untrained users.
- e. **Maintain power tools and accessories. Check for misalignment or binding of moving parts, breakage of parts and any other condition that may affect the power tool's operation. If damaged, have the power tool repaired before use.** Many accidents are caused by poorly maintained power tools.
- f. **Keep cutting tools sharp and clean.** Properly maintained cutting tools with sharp cutting edges are less likely to bind and are easier to control.
- g. **Use the power tool, accessories and tool bits etc. in accordance with these instructions, taking into account the working conditions and the work to be performed.** Use of the power tool for operations different from those intended could result in a hazardous situation.
- h. **Keep handles and grasping surfaces dry, clean and free from oil and grease.** Slippery handles and grasping surfaces do not allow for safe handling and control of the tool in unexpected situations.

5) Battery Tool Use And Care

- a. **Recharge only with the charger specified by the manufacturer.** A charger that is suitable for one type of battery pack may create a risk of fire when used with another battery pack.
- b. **Use power tools only with specifically designated battery packs.** Use of any other battery packs may create a risk of injury and fire.
- c. **When battery pack is not in use, keep it away from other metal objects, like paper clips, coins, keys, nails, screws**

or other small metal objects, that can make a connection from one terminal to another. Shorting the battery terminals together may cause burns or a fire.

- d. **Under abusive conditions, liquid may be ejected from the battery; avoid contact.** If contact accidentally occurs, flush with water. If liquid contacts eyes, additionally seek medical help. Liquid ejected from the battery may cause irritation or burns.
- e. **Do not use a battery pack or tool that is damaged or modified.** Damaged or modified batteries may exhibit unpredictable behaviour resulting in fire, explosion or risk of injury.
- f. **Do not expose a battery pack or tool to fire or excessive temperature.** Exposure to fire or temperature above 130 °C may cause explosion.
- g. **Follow all charging instructions and do not charge the battery pack or tool outside the temperature range specified in the instructions.** Charging improperly or at temperatures outside the specified range may damage the battery and increase the risk of fire.

6) Service

- a. **Have your power tool serviced by a qualified repair person using only identical replacement parts.** This will ensure that the safety of the power tool is maintained.
- b. **Never service damaged battery packs.** Service of battery packs should only be performed by the manufacturer or authorized service providers.



WARNING!

Only use following batteries: B20X2/B25X2/B40X2/B50X2/B60X2/B80X2 and chargers: CHX2/CHQX2/CHQX2-M-EU/CHDX2-M-EU.

GARDEN BLOWER, GARDEN VACUUM AND GARDEN BLOWER/VACUUM SAFETY WARNINGS

- a. **Do not use the machine in bad weather conditions, especially when there is a risk of lightning.** This decreases the risk of being struck by lightning.
- b. **Check the debris collector frequently for wear or deterioration.** A worn or damaged

debris collector may increase the risk of personal injury.

- c. **Wear eye protection and ear protection.** *Adequate protective equipment will reduce the risk of personal injury.*
- d. **While operating the machine, always wear non-slip and protective footwear. Do not operate the machine when barefoot or wearing open sandals.** *This reduces the risk of injury to the feet.*
- e. **Do not wear loose fitting clothing or articles such as scarves, strings, chains, ties, etc., that could get drawn into the air inlets. Tie back or cover long hair to make sure it does not get drawn into the air inlets.** *If any of these items are drawn into the air inlets, it can increase the risk of personal injury.*
- f. **Keep bystanders away while operating the machine.** *Thrown debris can increase the risk of personal injury.*
- g. **Do not use in vacuum mode without the debris collector in place.** *Thrown objects can increase the risk of personal injury.*
- h. **Never point the blower nozzle in the direction of people or pets or in the direction of windows. Use extra caution when blowing debris near solid objects, such as trees, automobiles and walls that can cause debris to ricochet.** *Thrown objects can damage property and increase the risk of personal injury.*
- i. **Do not use the machine to pick up or blow anything that is burning or smoking, such as cigarettes, matches or hot ashes.** *These ignition sources may increase the risk of fire.*
- j. **Do not vacuum water or other liquids or immerse any part of the machine in liquid.** *Water entering the machine may increase the risk of electric shock.*
- k. **Do not vacuum stones, gravel, metal or broken glass.** *The fan wheel can get damaged and may increase the risk of personal injury.*
- l. **Do not touch the fan while still in motion. Turn off the machine and wait until the fan stops before removing any part that may give access to the fan.** *This reduces the risk of injury from moving parts.*
- m. **When clearing jammed material or servicing the machine, make sure the power switch is off.** *Unexpected starting of the machine while clearing jammed material or servicing may result in serious personal injury.*

EMERGENCY

Familiarize yourself with the use of this product by means of this instruction manual. Memorize the safety directions and follow them to the letter. This will help to prevent risks and hazards.

1. Always be alert when using this product, so that you can recognize and handle risks early. Fast intervention can prevent serious injury and damage to property.
2. Switch off the product and remove the battery pack if there are malfunctions. Have the product checked by a qualified professional and repaired, if necessary, before you operate it again.

RESIDUAL RISKS

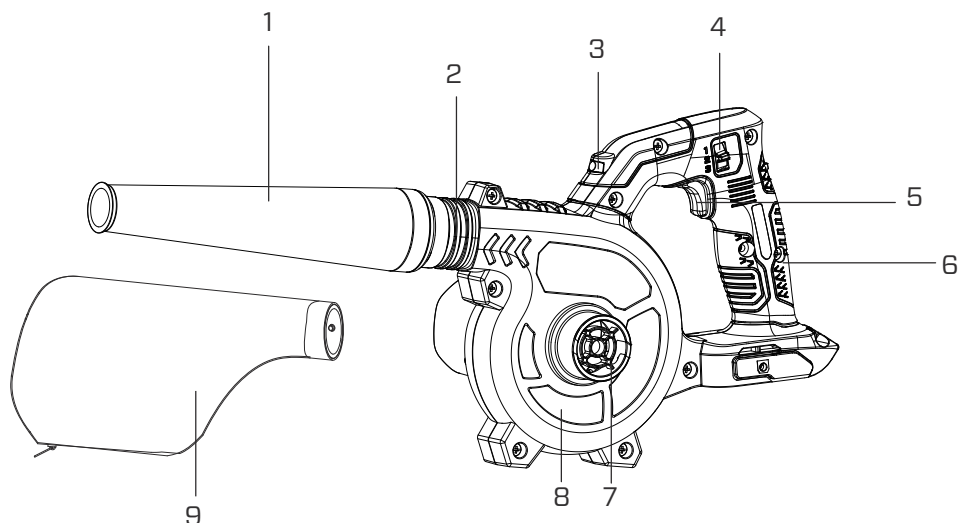
Even if you are operating this product in accordance with all the safety requirements, potential risks of injury and damage remain. The following dangers can arise in connection with the structure and design of this product:

1. Health defects resulting from vibration emission if the product is being used over long periods of time or not adequately managed and properly maintained.
2. Injuries and damage to property due to broken attachments or the sudden impact of hidden objects during use.
3. Danger of injury and property damage caused by flying objects.
4. Prolonged use of this product expose the operator to vibrations and may produce 'whitefinger' disease. In order to reduce the risk, please wear gloves and keep your hands warm. If any of the 'whitefinger' symptoms appear, seek medical advice immediately.
'Whitefinger' symptoms include: numbness, loss of feeling, tingling, pricking, pain, loss of strength, changes in skin colour or condition. These symptoms normally appear in the fingers, hands or wrists. The risk increases at low temperatures.

SAVE THESE INSTRUCTIONS INTENDED USE

This blower is only intended for blowing leaves, garden waste such as grass, twigs and pine needles in domestic use. Do not use it for other purposes.

KNOW YOUR UNIT



APPLICATIONS

Model: BLVX2-M-EU

As a blower:

Blowing leaves, garden waste such as grass, twigs and pine needles.

1	Blower Tube
2	Air Outlet Mounting Base
3	LED Light
4	Speed Control Switch
5	Trigger

6	Handle
7	Air Inlet Mounting Base
8	Housing
9	Collecting Bag

SPECIFICATIONS

Model	BLVX2-M-EU
Input voltage	18 V \approx (20 V \approx Max*)
No-load speed	0-19000 RPM
Max. air speed	81 m/s
Max. air volume	2 m ³ /min
Weight (tool only)	1.36 kg

*20V Max battery voltage (measured without a workload) is 20V. Nominal voltage is 18V.

ASSEMBLY

1. Unpack all parts and lay them on a flat, stable surface:
2. Remove all packing materials and shipping devices, if applicable.
3. Package Contents. Note that some items in the list below may not be included based on country of purchase or model number variant.

Model BLVX2-M-EU

- Cordless Jobsite Blower x1
- Blower tube x1
- Collecting bag x1
- Instruction Manual x1

4. If you find that parts are missing or show damage do not use the product, but return it where you bought it to receive a replacement. Using an incomplete or damaged product represents a hazard to people and property.
5. Ensure that you have all the accessories and tools needed for assembly and operation. This also includes suitable personal protective equipment.



WARNING!



Wear protective gloves for this assembly work and always lay the product on a flat and stable surface while assembling.



Follow the assembly instructions step-by-step and use the pictures

provided as a visual guide to easily assemble the product!

Do not insert the battery pack before the power tool is completely assembled or adjusted!

INSTALLING THE BLOWER TUBE



WARNING!

To avoid serious personal injury and damage to the unit, shut the unit off before removing or installing an attachment.

Align and attach the blower tube to the air outlet mounting base. Rotate clockwise for snapping the raised block of the blower tube into slot.

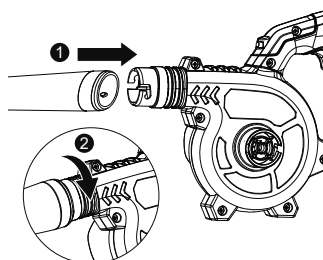


Fig. 1

INSTALLING THE COLLECTING BAG

1. Rotate counterclockwise and pull the blower tube out of the air outlet mounting base.
2. Align and attach the blower to the air inlet mounting base on the side housing of the product. Rotate clockwise to locate the raised block into slot.

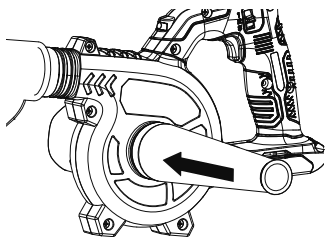


Fig. 2

3. Attach the collecting bag to the air outlet mounting base. Make sure the inner raised block of collecting bag holder is firmly in place as well.

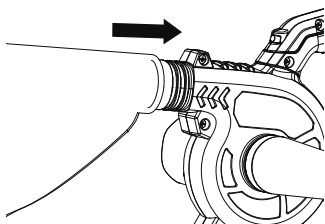


Fig. 3

INSTALLING/REMOVING THE BATTERY PACK

To install:

Align and slide the battery pack into the docking port until it is locked in place.

To remove:

Press the release button on battery pack and remove the battery pack from the product.

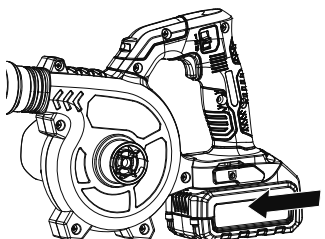


Fig. 4

OPERATION



WARNING!

Inspect the tool for complete installation. Anything missing, damaged, or misplaced parts may cause serious injury. Wear protective equipment at all times while operating the power tool.

SWITCHING ON/OFF

1. Check and secure all accessories.
2. Press the trigger to turn on the blower.
3. Release the trigger to turn off the blower.

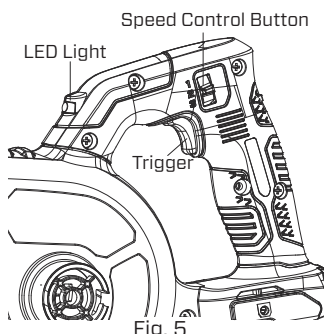


Fig. 5



WARNING!

Wait until it comes to a complete stop before putting the product down!



NOTE:

The LED light will automatically turn on/off when the blower starts/stops.

ADJUSTING BLOWING SPEED

The blowing speed can be changed by speed control switch. Adjust to desired blower speed to meet your requirement.

OPERATING HOURS

Only operate the product at reasonable hours - not early in the morning, late at night or on

weekends/ public holidays when people might be disturbed. Inform yourself about local restrictions.

GENERAL

1. Double check that accessories or application tools are properly fixed.
2. Always hold the product by its handle. Keep the handle dry and clean to ensure safe support.
3. Ensure that the air vents are always unobstructed and clear. Clean them if necessary with a soft brush. Blocked air vents may lead to overheating and damage the product.
4. Switch the product off immediately if you are disturbed while working by other people entering the working area. Always let the product come to a complete stop before putting it down.
5. Do not direct the blower air stream toward any solid objects such as loose stones or fallen tree branches.
6. Before switching the product on, check whether it has been assembled correctly and all the moving parts are running smoothly!
7. While working, ensure that the product does not strike hard objects, as this can cause damage.
8. Do not blow any solid bodies such as stones, branches or other debris.
9. We recommend slightly dampening surfaces in dusty conditions or using a moisture attachment.



WARNING!

Operation risks may occur, such as blown debris cutting skin, getting into the eyes or mouth, or being inhaled into the lungs. Always wear eye, respiratory, hearing, hand, foot, and body protection to reduce the risk of injury when operating this unit.

BLOWING

1. Before blowing, loosen leaves that are stuck to the ground using a broom or rake.
2. Hold the tube approximately 10cm (4 inch) above the ground and walk slowly forward using a sweeping motion from side to side.
3. Direct the air stream away from yourself.
4. Ensure that you do not stir up any heavy

objects at the risk of harming others or damaging your surroundings.



WARNING!

Immediately power off the blower in the event of any abnormal vibrations. Abnormal vibration often shows a mechanical problem and continuous use could result in injury or property damage.

VACUUMING



NOTE:

Do not use vacuuming mode unless the collecting bag is well installed.

1. Always hold the handle tightly to maintain good control of the machine during use.
2. Make sure the bag is properly installed and the zipper is closed.
3. When operating the unit as a blower, never point the blower tube in the direction of people or pets or in the direction of window. Use extra caution when blowing debris near solid objects, such as trees, automobiles, and walls.
4. As the bag fills, suction power will decrease. When this happens, turn off the product and remove the battery. Detach the collecting bag and empty debris.
5. With a firm hold on the unit, tilt the blower tubes to collect light debris. The debris will flow into the bag. Items such as small leaves and twigs will be mulched as they pass through the fan housing. For longer bag life and optimal performance, empty the bag frequently.
6. Do not wear loose clothing. Drawing into the air inlet or blocking the air vents both can cause serious accidents.



WARNING!

Never remove the collecting bag without first turning off the product and remove the battery.

OVERHEAT PROTECTION

When the tool/battery is overheated, the tool stops automatically. In this situation, let the

power tool/battery cool before turning the tool on again.

OVERDISCHARGE PROTECTION

When the battery capacity is not enough, the tool stops automatically. In this case, remove the battery from the tool and charge the battery.

MAINTENANCE



WARNING:

Always switch the blower off, remove the battery pack, and let the product cool down before performing cleaning and maintenance work!

Always wear eye, respiratory, hearing, hand, foot, and body protection to reduce the risk of injury when operating this unit.

Only perform cleaning and maintenance work according to these instructions! Any additional maintenance or repairs must be performed by a qualified specialist using genuine replacement parts.

CLEANING

- Switch the product off, remove the battery pack from the product.
- Clear off debris from blower tube.
- Remove the collecting bag and empty it. Wash the bag if necessary.
- Remove wood chips and other debris from air vents.
- Use a small brush to clean the outside of the unit. Do not use strong detergents. Household cleaners that contain aromatic oils such as pine and lemon, and solvents such as kerosene, can damage plastic.
- Wipe off any moisture with a soft cloth. The tool should never come in contact with water.

TRANSPORT

- Clean the product as described above.
- Always carry the product by its handle.
- Protect the product from any heavy impact or strong vibrations which may occur during transportation in vehicles.
- Secure the product to prevent it from slipping or falling over, becoming damaged,

or falling over and causing damage or injury.

STORAGE

- Clean the product as described above.
- Let the collecting bag dry before storage.
- Store the product and its accessories in a dark, dry, frost-free, well-ventilated place.
- Always store the product in a place that is inaccessible to children. The ideal storage temperature is between 0°C (32°F) and 40°C (104°F).
- We recommend using the original package for storage or covering the product with a suitable cloth or enclosure to protect it against dust.



NOTE:

To prolong battery life, never store battery pack in a completely discharged condition. Make sure the battery pack is charged once per year or when the LED indicator shows only one light.

DISPOSAL

When this product is no longer usable, do not dispose of it with household waste. It must be recycled at a proper facility.



Electrical products should not be discarded with household products. Used electrical products must be collected separately and disposed of at collection points provided for this purpose. Check with your local authorities or retailer for advice on recycling.

TROUBLESHOOTING

Suspected malfunctions are often due to causes that the users can fix themselves. Therefore, check the product using this section. In most cases the problem can be solved quickly.

PROBLEM	POSSIBLE CAUSE	SOLUTION
Product does not start	Battery pack not properly attached	Remove from product and reattach
	Battery pack capacity too low	Remove and charge battery pack
	Battery pack damaged	Check by a specialist electrician
Product does not reach full power	Battery pack capacity too low	Charge battery pack
	Air vents are blocked	Clean the air vents
Vibration or noise is excessive	Bolts/nuts are loose	Tighten bolts/nuts
Product suddenly stops	Battery pack capacity too low	Remove and recharge battery pack
	Battery too hot	Remove battery pack and let it cool down

